

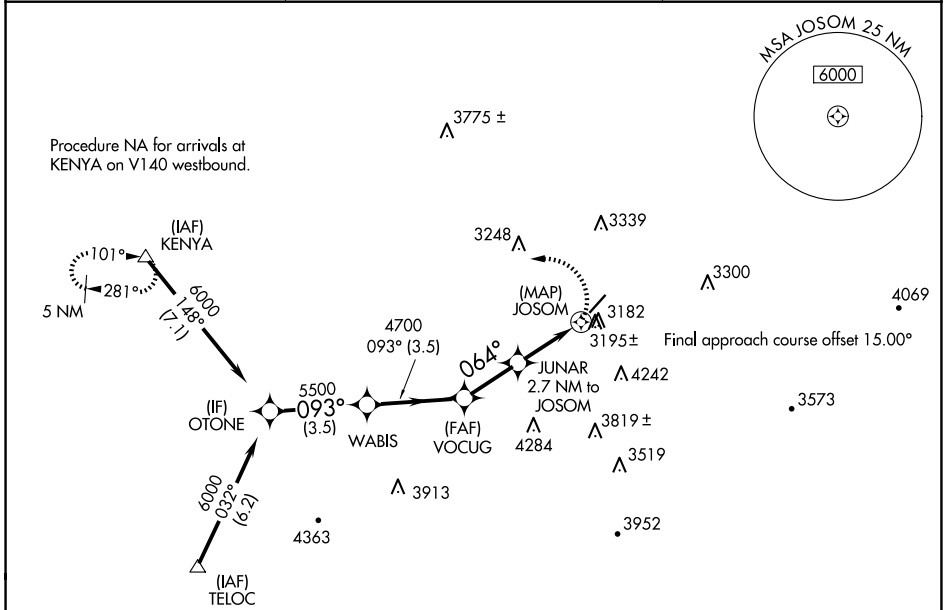
APP CRS 064°	Rwy Idg 4743
	TDZE 2850
	Apt Elev 2857

RNAV (GPS) RWY 5

MERCER COUNTY (BLF)

RNP APCH.	MISSED APPROACH: Climbing left turn to 6000 direct KENYA and hold.
<p>Procedure NA at night. Rwy 5 helicopter visibility reduction below 1 SM NA.</p>	

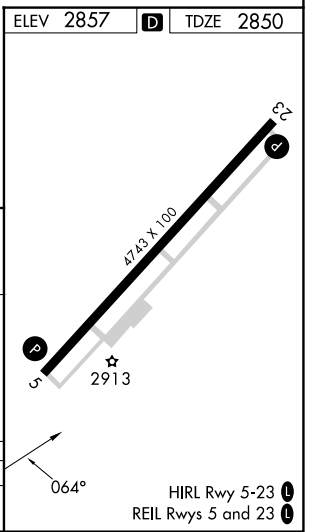
ASOS 132.725	INDIANAPOLIS CENTER 126.575 257.85	CTAF 122.9
------------------------	--	----------------------



NE-4, 20 MAR 2025 to 17 APR 2025

NE-4, 20 MAR 2025 to 17 APR 2025

ELEV 2857	TDZE 2850
-----------	-----------



OTONE	WABIS	VOCUG	JUNAR 2.7 NM to JOSOM	JOSOM
6000	5500	4700	3940	
3.5 NM	3.5 NM	2.3 NM	2.7 NM	0.5 NM

CATEGORY	A	B	C	D
LNAV MDA	3560-1	710 (800-1)	3560-2	3560-2 1/4
			710 (800-2)	710 (800-2 1/4)