

VOR/DME BLF <b>115.05</b> Chan <b>97</b> (Y)	APP CRS <b>225°</b>	Rwy Idg TDZE Apt Elev	<b>4743</b> <b>2857</b> <b>2857</b>
--	------------------------	-----------------------------	---

# VOR RWY 23

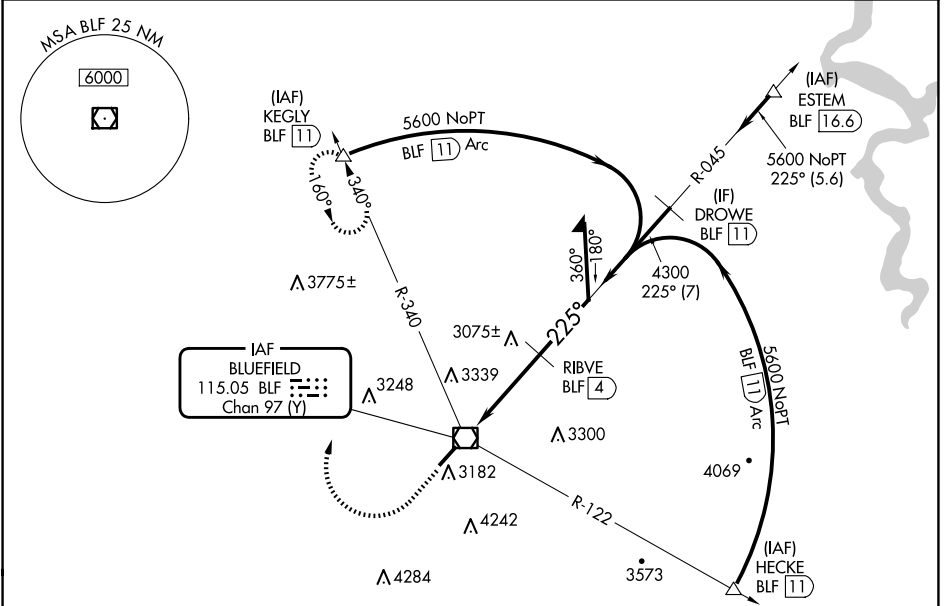
MERCER COUNTY (BLF)

DME required.

⚠ When local altimeter setting not received, use BKW altimeter setting and increase all MDAs 460 feet; increase S-23 all visibilities 1 1/4 SM and Circling visibility Cat A/B/C 3/4 SM. VDP NA when using Beckley altimeter setting. Circling NA southeast of Rwy 5-23.

MISSED APPROACH: Climb to 3800 then climbing right turn to 6000 on heading 020° and BLF R-340 to KEGLY/BLF 11 DME and hold.

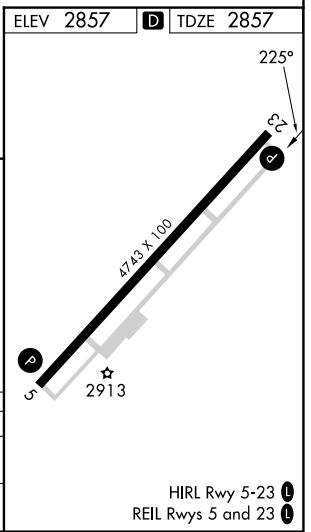
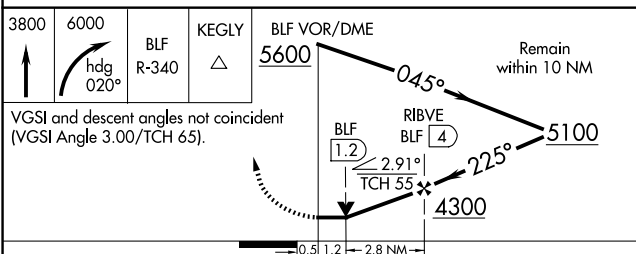
ASOS <b>132.725</b>	INDIANAPOLIS CENTER <b>126.575 257.85</b>	CTAF <b>122.9</b> ①
------------------------	--	------------------------



NE-4, 20 MAR 2025 to 17 APR 2025

NE-4, 20 MAR 2025 to 17 APR 2025

ELEV 2857	TDZE 2857
-----------	-----------



CATEGORY	A	B	C	D
S-23	3440-1	583 (600-1)	3440-1 3/4	583 (600-1 3/4)
CIRCLING	3440-1 583 (600-1)	3460-1 603 (700-1)	3640-2 1/4 783 (800-2 1/4)	3780-3 923 (1000-3)

HIRL Rwy 5-23 ①  
REIL Rwys 5 and 23 ①