

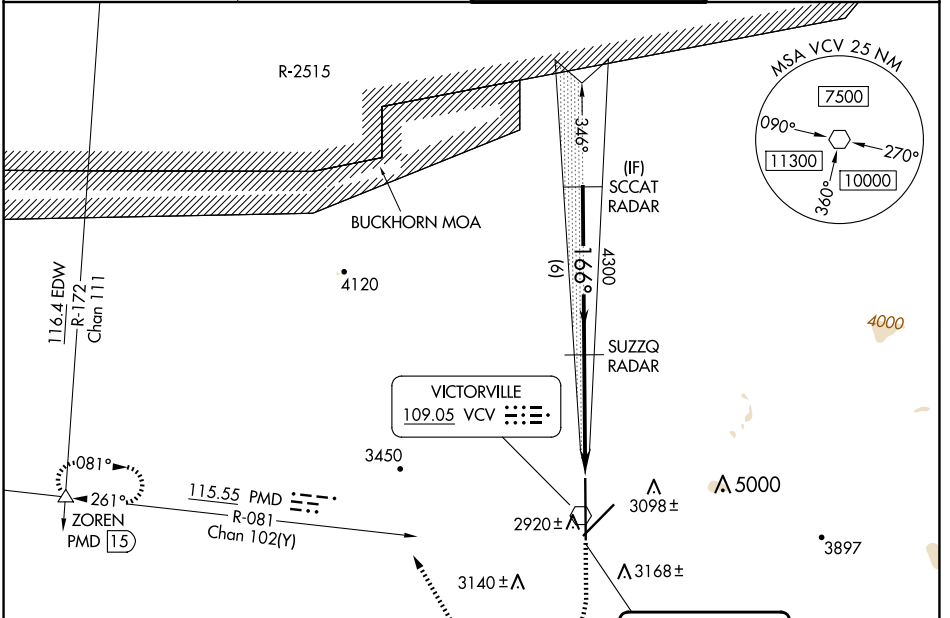
LOC I-VCV <b>108.75</b>	APP CRS <b>166°</b>	Rwy Idg TDZE Apt Elev	<b>13052</b> <b>2830</b> <b>2885</b>
----------------------------	------------------------	-----------------------------	--

# LOC RWY 17

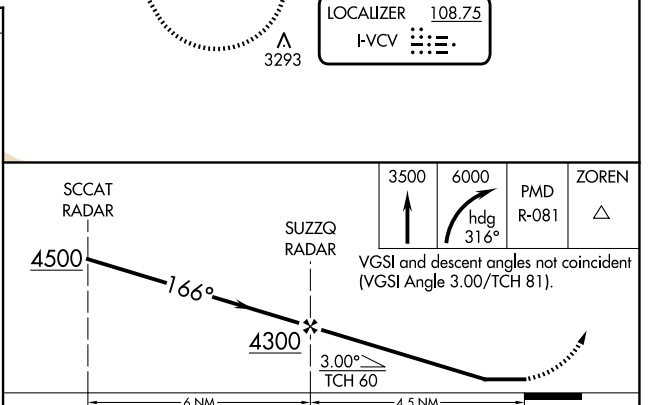
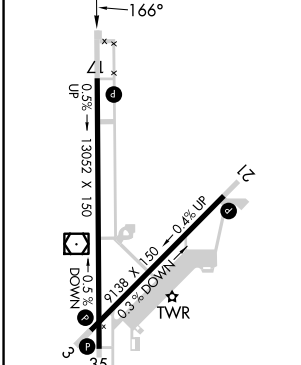
SOUTHERN CALIFORNIA LOGISTICS (VCV)

RADAR required.		MISSED APPROACH: Climb to 3500 then climbing right turn to 6000 on heading 316° and on PMD VORTAC R-081 to ZOREN INT/PMD 15 DME and hold.	
⚠ Circling NA for Cats C and D southeast of Rws 35 and 21. When local altimeter setting not received use Edwards AFB altimeter setting and increase all MDAs 160 feet, and Circling visibility Cat C ½ SM.			

ATIS <b>135.475</b>	JOSHUA APP CON <b>124.55 363.0</b>	VICTORVILLE TOWER ★ <b>118.35(CTAF) 282.225</b>	GND CON <b>124.45</b>
------------------------	---------------------------------------	--	--------------------------



ELEV 2885	D	TDZE 2830
-----------	---	-----------



REIL Rws 17 and 35 HIRL Rws 3-21 and 17-35																
FAF to MAP 4.5 NM																
<table border="1"> <tr> <td>Knots</td> <td>60</td> <td>90</td> <td>120</td> <td>150</td> <td>180</td> </tr> <tr> <td>Min:Sec</td> <td>4:30</td> <td>3:00</td> <td>2:15</td> <td>1:48</td> <td>1:30</td> </tr> </table>	Knots	60	90	120	150	180	Min:Sec	4:30	3:00	2:15	1:48	1:30				
Knots	60	90	120	150	180											
Min:Sec	4:30	3:00	2:15	1:48	1:30											
CATEGORY	A	B	C	D												
S-LOC 17	3180/55 350 (300-1)															
CIRCLING	3380-1 495 (500-1)	3420-1 535 (600-1)	3460-1½ 575 (600-1½)	3780-3 895 (900-3)												

SW-3, 20 MAR 2025 to 17 APR 2025

SW-3, 20 MAR 2025 to 17 APR 2025