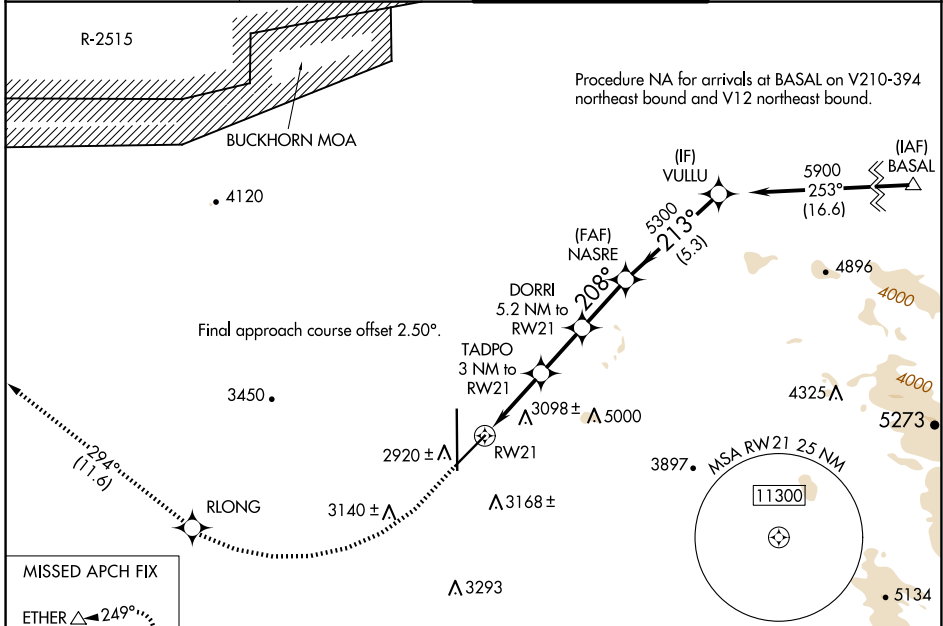


WAAS CH 82246 W21A	APP CRS 208°	Rwy Idg TDZE Apt Elev	9138 2858 2885
--	------------------------	-----------------------------	---

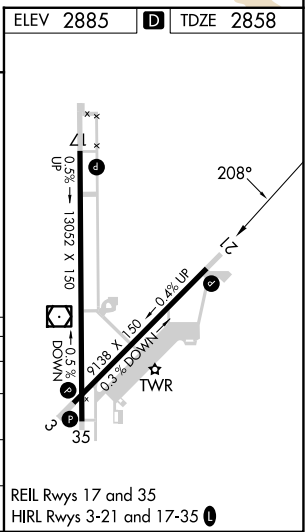
RNAV (GPS) RWY 21

SOUTHERN CALIFORNIA LOGISTICS (V CV)

RNP APCH - GPS.		MISSED APPROACH: Climb to 3500 then climbing right turn to 6000 direct RLONG and on track 294° to ETHER and hold.	
⚠ Circling NA for C and D southeast of Rws 35 and 21. ⚠ For uncompensated Baro-VNAV systems, LNAV/VNAV NA below -20°C or above 54°C.	ATIS 135.475	JOSHUA APP CON 124.55 363.0	VICTORVILLE TOWER * 118.35 (CTAF) 282.225
			GND CON 124.45



ELEV 2885	TDZE 2858			
3500	6000			
RLONG	tr 294°			
ETHER	VGSI and RNAV glidepath not coincident (VGSI Angle 3.00/TCH 85).			
NASRE	VULLU			
TADPO 3 NM to RW21	DORRI 5.2 NM to RW21			
1.7 NM to RW21	5300			
3860	4560			
208°	213°			
5300	5900			
GP 3.00°	TCH 60			
1.7 NM	1.3 NM	2.2 NM	2.3 NM	5.3 NM
CATEGORY	A	B	C	D
LPV DA	3108-1		250 (300-1)	
LNAV/VNAV DA	3153-1		295 (300-1)	
LNAV MDA	3480-1 622 (600-1)		3480-1¾ 622 (600-1¾)	
CIRCLING	3480-1 595 (600-1)		3480-1¾ 3760-2¾ 875 (900-2¾)	



SW-3, 20 MAR 2025 to 17 APR 2025

SW-3, 20 MAR 2025 to 17 APR 2025