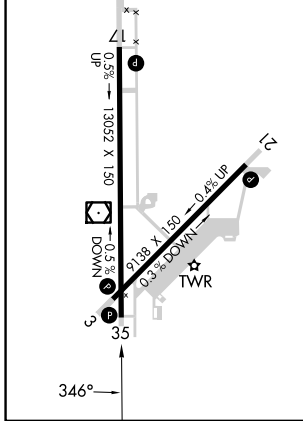
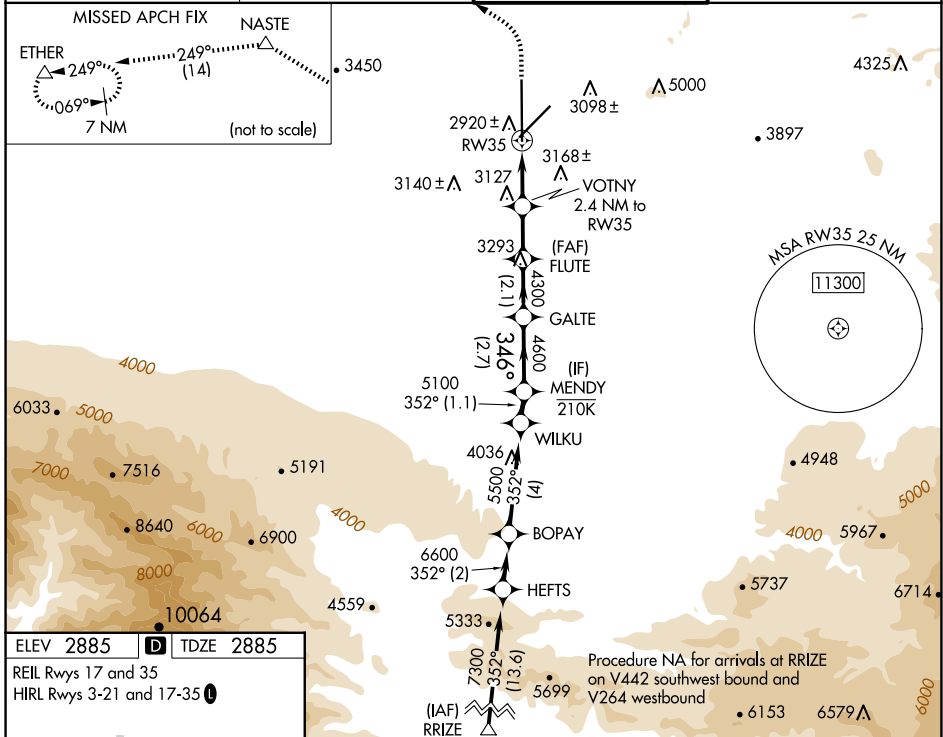


WAAS CH 97746 W35A	APP CRS 346°	Rwy Idg TDZE Apt Elev	13052 2885 2885
--	------------------------	-----------------------------	--

RNAV (GPS) RWY 35

SOUTHERN CALIFORNIA LOGISTICS (V_CV)

RNP APCH - GPS.		MISSED APPROACH: Climb to 3500 then climbing left turn to 6000 direct NASTE and on track 249° to ETHER and hold.	
<p>⚠ Circling NA for C and D southeast of Rwsy 35 and 21.</p> <p>⚠ For uncompensated Baro-VNAV systems, LNAV/VNAV NA below -20°C or above 54°C.</p>	<p>ATIS 135,475</p> <p>JOSHUA APP CON 124.55 363.0</p>	<p>VICTORVILLE TOWER ★ 118.35(CTAF) 282.225</p>	<p>GND CON 124.45</p>



ELEV 2885	D	TDZE 2885		
REIL Rwsy 17 and 35 HIRL Rwsy 3-21 and 17-35				
3500	6000	NASTE	tr 249°	ETHER
VGSi and RNAV glidepath not coincident (VGSi Angle 3.00/TCH 64).				
		FLUTE	GALTE	MENDY
		4300	4600	5100
		3700	4300	GP 3.00° TCH 60
		-1.4 NM	-1.9 NM	-2.1 NM
		-1.4 NM	-1.9 NM	-2.1 NM
CATEGORY	A	B	C	D
LPV DA	3085-1 200 (200-1)			
LNAV/VNAV DA	3411-1½ 526 (600-1½)			
LNAV MDA	3380-1	495 (500-1)	3380-1⅓	495 (500-1⅓)
CIRCLING	3380-1 495 (500-1)	3420-1 535 (600-1)	3460-1½ 575 (600-1½)	3760-2¾ 875 (900-2¾)

SW-3, 20 MAR 2025 to 17 APR 2025

SW-3, 20 MAR 2025 to 17 APR 2025