

WAAS CH <b>93904</b> <b>W17A</b>	APP CRS <b>167°</b>	Rwy Idg TDZE <b>1864</b> Apt Elev <b>1864</b>	<b>5000</b>
--	------------------------	---	-------------

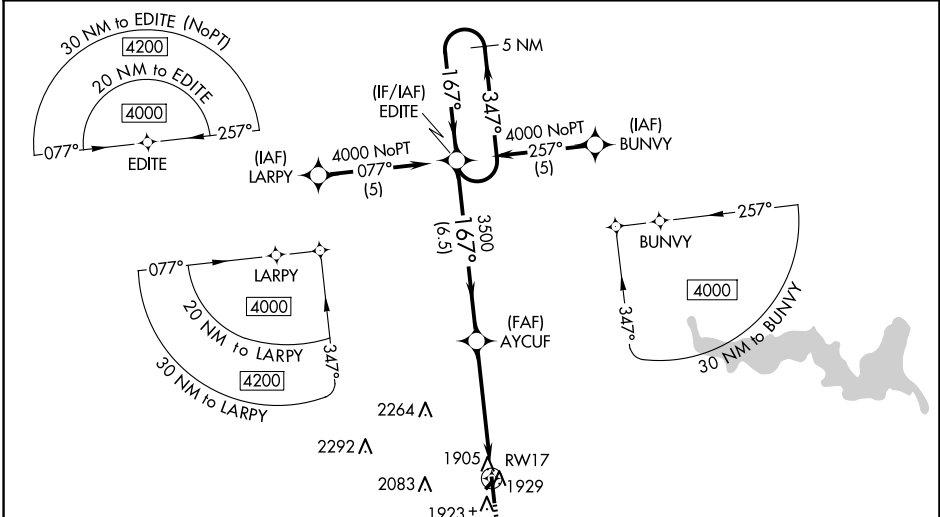
# RNAV (GPS) RWY 17

RUSSELL MUNI (RSL)

**⚠** Baro-VNAV and VDP NA when using Hays altimeter setting. For uncompensated Baro-VNAV systems, LNAV/VNAV NA below -18°C (0°F) or above 54°C (130°F). DME/DME RNP-0.3 NA. Helicopter visibility reduction below ¼ SM NA. When local altimeter setting not received, use Hays altimeter setting: increase LPV DA all Cats to 2186 feet, LNAV/VNAV all Cats DA to 2244 feet and all visibilities ¼ SM; increase all MDA 80 feet and LNAV Cat C and Circling Cat C visibility ¼ SM. Circling NA to Rwys 3 and 21.

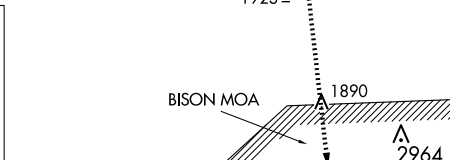
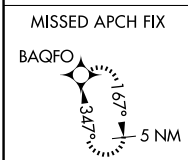
**MISSED APPROACH:**  
Climb to 4000 direct  
BAQFO and hold.

ASOS <b>128.325</b>	KANSAS CITY CENTER <b>124.4 322.4</b>	UNICOM <b>122.7 (CTAF) 0</b>
------------------------	--	---------------------------------

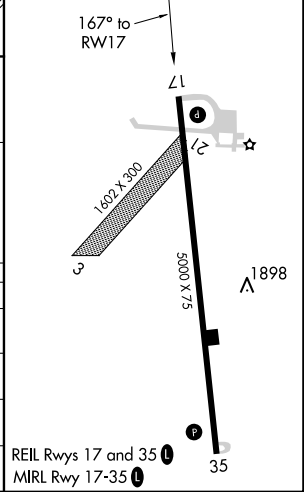
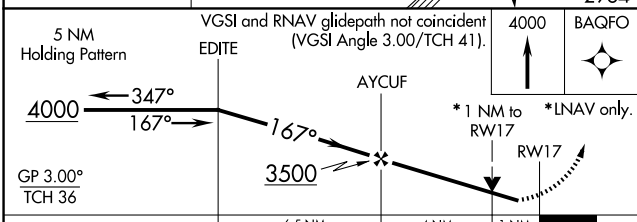


NC-2, 20 MAR 2025 to 17 APR 2025

NC-2, 20 MAR 2025 to 17 APR 2025



ELEV 1864	TDZE 1864
-----------	-----------



CATEGORY	A	B	C	D
LPV DA	2117-1	253 (300-1)		NA
LNAV/VNAV DA	2175-1 1/8	311 (400-1 1/8)		NA
LNAV MDA	2220-1	356 (400-1)		NA
CIRCLING	2240-1 376 (400-1)	2320-1 456 (500-1)	2620-2 1/4 756 (800-2 1/4)	NA