

COLEMAN, TEXAS

AL-881 (FAA)

24025

WAAS CH 86529 W15A	APP CRS 148°	Rwy Idg TDZE Apt Elev	4506 1697 1697
--	------------------------	-----------------------------	---

RNAV (GPS) RWY 15

COLEMAN MUNI (COM)

RNP APCH - GPS.

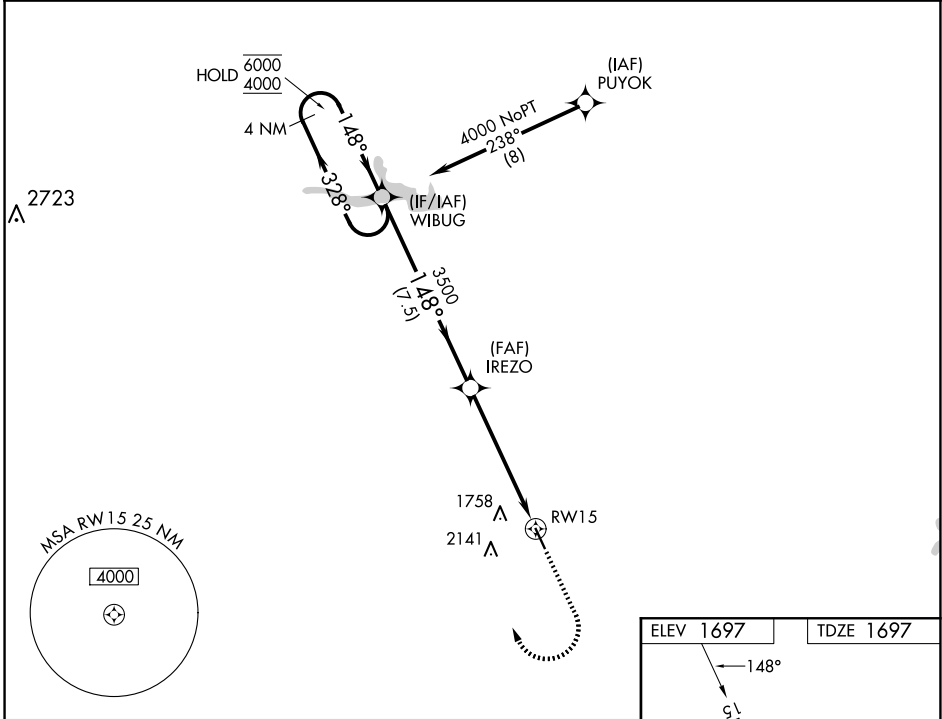
▼ Rwy 15 helicopter visibility reduction below 3/4 SM NA.
▲ For uncompensated Baro-VNAV systems, LNAV/VNAV NA below -18°C or above 54°C.

MISSED APPROACH: Climb to 3000 then climbing right turn to 4000 direct WIBUG and hold.

AWOS-3PT
119.1

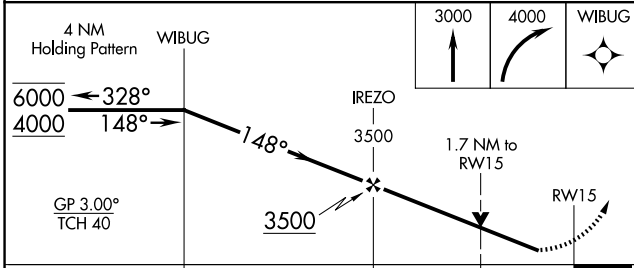
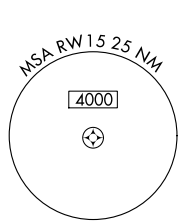
FORT WORTH CENTER
127.45 290.3

UNICOM
122.8 (CTAF) 0

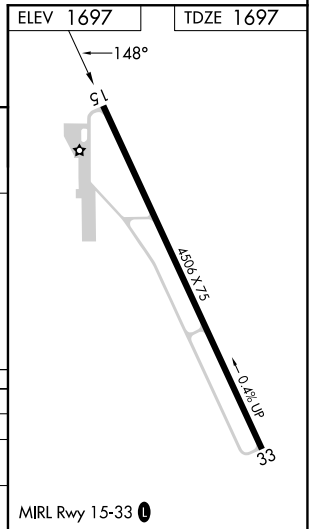


SC-3, 20 MAR 2025 to 17 APR 2025

SC-3, 20 MAR 2025 to 17 APR 2025



CATEGORY	A	B	C	D
LPV DA	1947-3/4	250 (300-3/4)		NA
LNAV/VNAV DA	2238-15/8	541 (600-15/8)		NA
LNAV MDA	2280-1	583 (600-1)	2280-13/4 583 (600-13/4)	NA



COLEMAN, TEXAS
Amdt 1B 19MAY22

31°50'N-99°24'W

COLEMAN MUNI (COM) RNAV (GPS) RWY 15