

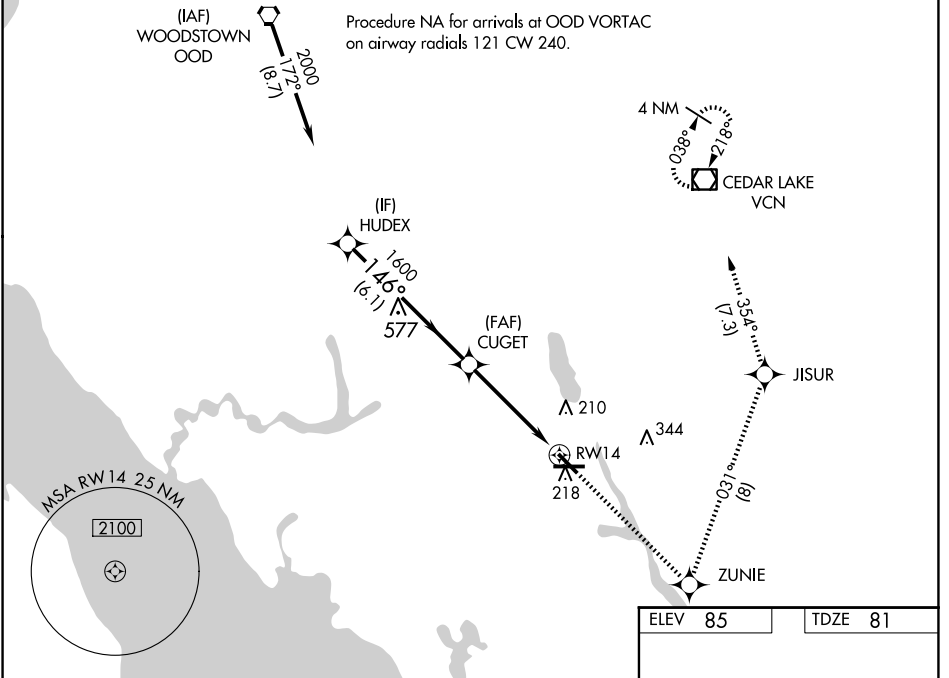
WAAS CH 82000 W14A	APP CRS 146°	Rwy Idg TDZE Apt Elev	5058 81 85
--	------------------------	-----------------------------	---------------------------------------

RNAV (GPS) RWY 14

MILLVILLE MUNI (MIV)

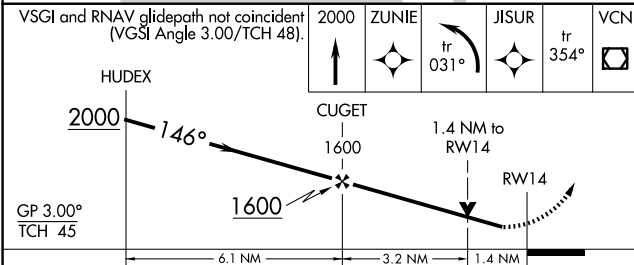
RNP APCH-GPS.	MISSED APPROACH: Climb to 2000 direct ZUNIE and left turn on track 031° to JISUR and on track 354° to VCN VOR/DME and hold.
<p>V Rwy 14 helicopter visibility reduction below 3/4 SM NA. For uncompensated Baro-VNAV systems, LNAV/VNAV NA below -15°C or above 54°C.</p>	

ASOS 119.6	ATLANTIC CITY APP CON 124.6 327.125	UNICOM 123.0 (CTAF) 0
----------------------	---	---------------------------------

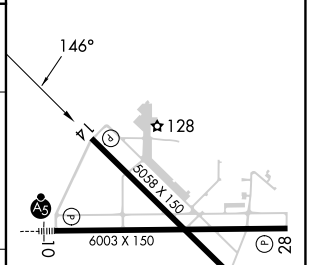


NE-2, 20 MAR 2025 to 17 APR 2025

NE-2, 20 MAR 2025 to 17 APR 2025



ELEV 85	TDZE 81
----------------	----------------



CATEGORY	A	B	C	D
LPV DA		377-7/8	296 (300-7/8)	
LNAV/VNAV DA		550-1 3/8	469 (500-1 3/8)	
LNAV MDA	580-1	499 (500-1)	580-1 3/8	499 (500-1 3/8)
CIRCLING	580-1	495 (500-1)	660-1 1/2 575 (600-1 1/2)	660-2 575 (600-2)

MIRL Rwy's 10-28 and 14-32 0