


WAAS CH <b>86206</b> <b>W36A</b>	APP CRS <b>356°</b>	Rwy Idg TDZE Apt Elev	<b>8002</b> <b>200</b> <b>203</b>
--	------------------------	-----------------------------	---

# RNAV (GPS) RWY 36

VALDOSTA RGNL (VLD)

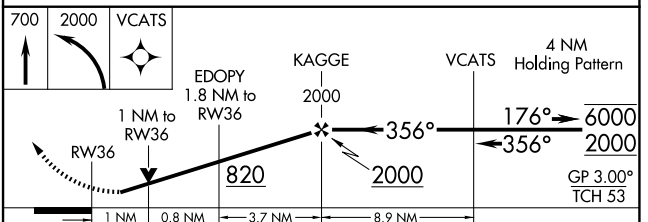
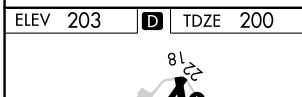
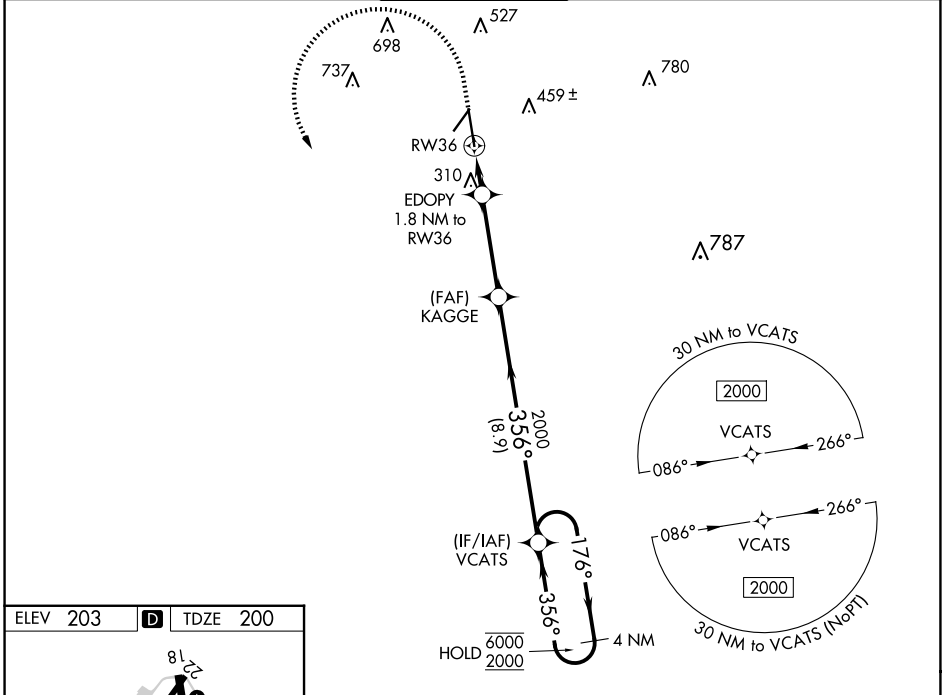
RNP APCH - GPS.

**⚠** For uncompensated Baro-VNAV systems, LNAV/VNAV NA below -4°C or above 54°C. Rwy 36 helicopter visibility reduction below ¾ SM NA. For inop ALS, increase LPV and LNAV/VNAV all Cats visibility to ¾ SM and LNAV all Cats visibility to 1 SM.

MALSR 

MISSED APPROACH: Climb to 700 then climbing left turn to 2000 direct VCATS and hold.

ASOS <b>126.225</b>	VALDOSTA APP CON * <b>126.6 285.6</b>	VALDOSTA TOWER * <b>128.35 (CTAF) 0</b>	GND CON <b>121.7</b>	UNICOM <b>122.95</b>
------------------------	--	--	-------------------------	-------------------------



CATEGORY	A	B	C	D
LPV DA		489-¾ 289 (300-¾)		
LNAV/VNAV DA		482-¾ 282 (300-¾)		
LNAV MDA		560-¾ 360 (400-¾)		
CIRCLING	640-1 437 (500-1)	700-1 497 (500-1)	900-2 697 (700-2)	1020-2¾ 817 (900-2¾)

SE-4, 20 MAR 2025 to 17 APR 2025

SE-4, 20 MAR 2025 to 17 APR 2025