

| | | | |
|--|------------------------|-----------------------------|---|
| WAAS CH 90500 W18A | APP CRS 183° | Rwy Idg TDZE Apt Elev | 4806 553 569 |
|--|------------------------|-----------------------------|---|

RNAV (GPS) RWY 18

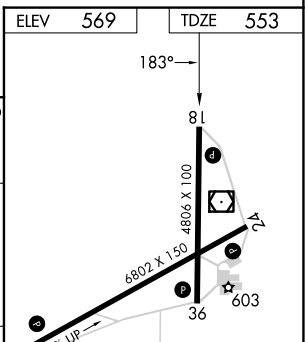
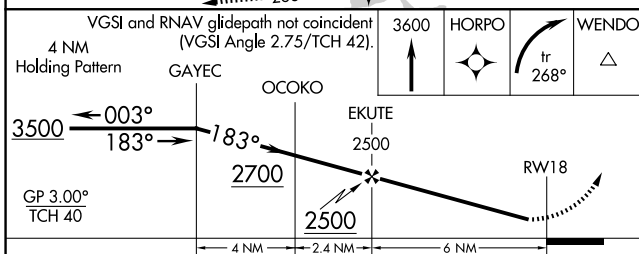
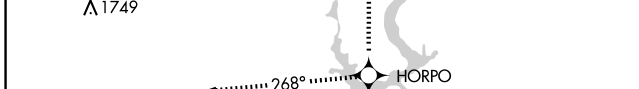
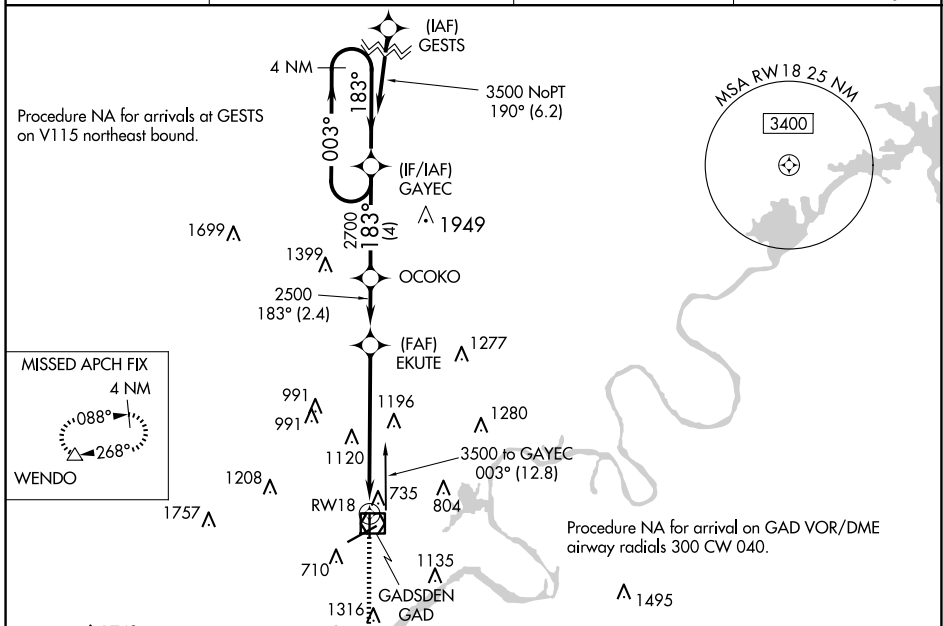
NORTHEAST ALABAMA RGNL (GAD)

RNP APCH.

⚠ Baro-VNAV NA when using Anniston altimeter setting. For uncompensated Baro-VNAV systems, LNAV/VNAV NA below -16°C or above 54°C. Rwy 18 helicopter visibility reduction below ¾ SM NA. When local altimeter not setting received, use Anniston altimeter setting and increase all DAs 66 feet and all MDAs 80 feet.

MISSED APPROACH: Climb to 3600 direct HORPO and on track 268° to WENDO and hold.

| | | | |
|----------------------------|--|---------------------------------|---------------------------------|
| AWOS-3PT 127.825 | BIRMINGHAM APP CON 125.45 279.65 | CLNC DEL 120.05 257.7 | UNICOM 122.8 (CTAF) 0 |
|----------------------------|--|---------------------------------|---------------------------------|



| CATEGORY | A | B | C | D |
|-------------------|---------------------------|---------------------------|------------------------|-------------------------|
| LPV DA | | 847-1 | 294 (300-1) | |
| LNAV/VNAV DA | | 1539-4 | 986 (1000-4) | |
| LNAV MDA | 1560-1¼ 1007 (1000-1¼) | 1560-1½ 1007 (1000-1½) | 1560-3 | 1007 (1000-3) |
| C CIRCLING | 1560-1¼ 991 (1000-1¼) | 1560-1½ 991 (1000-1½) | 1560-3 991 (1000-3) | 1680-3 1111 (1200-3) |

HIRL Rwy 6-24 **1**

MIRL Rwy 18-36 **1**

REIL Rwy 6 and 24 **1**

SE-4, 20 MAR 2025 to 17 APR 2025

SE-4, 20 MAR 2025 to 17 APR 2025