

APP CRS	Rwy Idg	<b>7345</b>
<b>144°</b>	TDZE	<b>119</b>
	Apt Elev	<b>153</b>

# RNAV (GPS) RWY 14

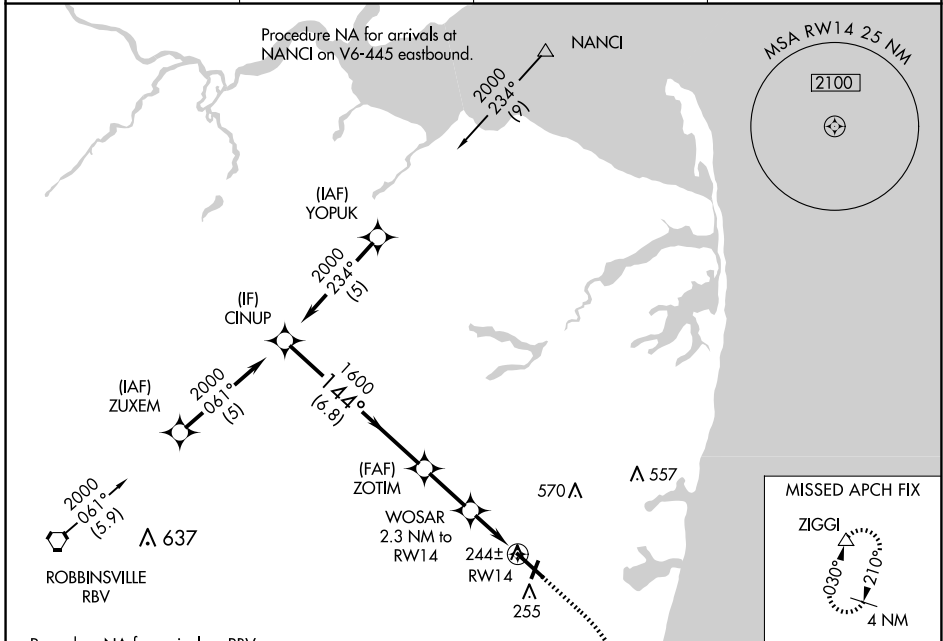
MONMOUTH EXEC (BLM)

RNP APCH.

⚠ Circling Rwy 3, 21 NA at night. Rwy 14 helicopter visibility reduction below 3/4 SM NA. VDP NA when using Lakehurst altimeter setting. When local altimeter setting not received, use Lakehurst altimeter setting: increase all MDA 40 feet and LNAV Cats C/D visibility 1/8 SM and Circling Cat C/D visibility 1/4 SM.

MISSED APPROACH: Climb to 600 then climbing right turn to 2000 direct ZIGGI and hold.

AWOS-3PT <b>121.625</b>	MC GUIRE APP CON <b>126.475 363.8</b>	CLNC DEL <b>126.15</b>	UNICOM <b>123.0</b> (CTAF)
----------------------------	--	---------------------------	-------------------------------



Procedure NA for arrival on RBV  
VORTAC airway radials 001 CW 122.

MISSED APCH FIX

ZIGGI

30°

210°

4 NM

ELEV	153	TDZE	119
------	-----	------	-----



	CINUP	ZOTIM	WOSAR	ZIGGI
	2000	1600	880	2000
	144°	3.00°	1.4 NM to RW14	ZIGGI
	6.8 NM	2.2 NM	0.9	1.4

CATEGORY	A	B	C	D	
LNAV MDA	500-1	381 (400-1)	500-1 1/8	381 (400-1 1/8)	
CIRCLING	560-1 407 (500-1)	620-1 467 (500-1)	880-2 727 (800-2)	880-2 1/4 727 (800-2 1/4)	MIRL Rwy 14-32 REIL Rwy 14

NE-2, 20 MAR 2025 to 17 APR 2025

NE-2, 20 MAR 2025 to 17 APR 2025