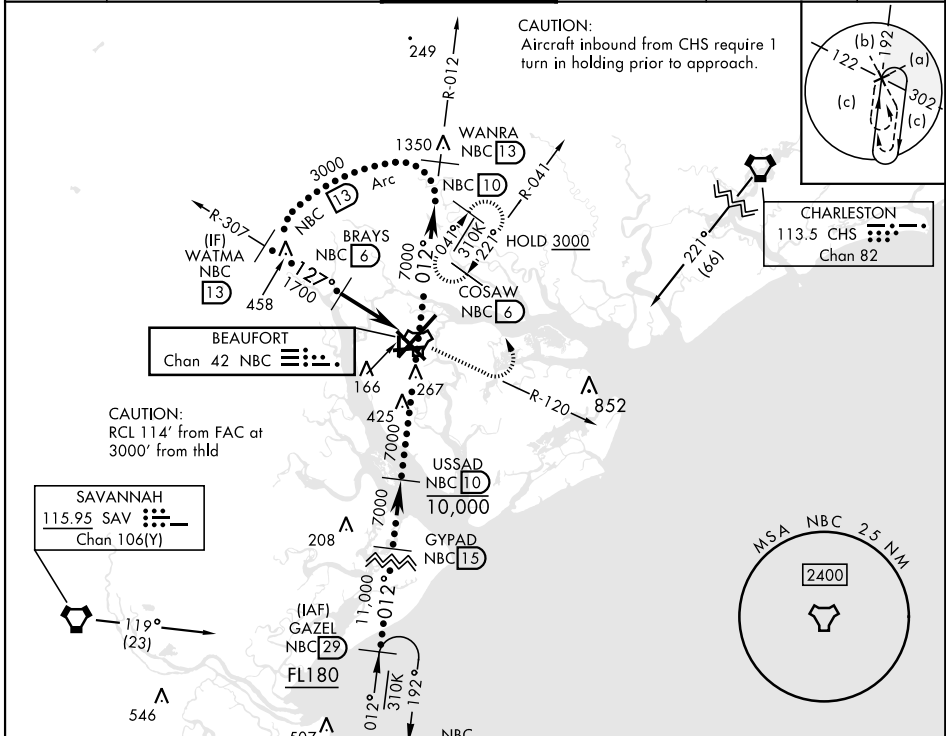


BEAUFORT, SOUTH CAROLINA

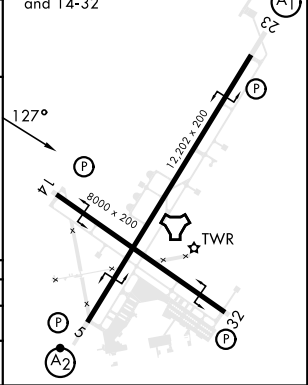
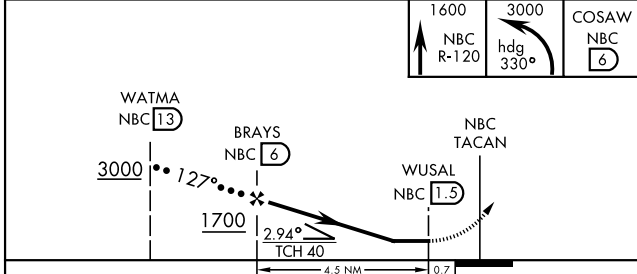
HI-TACAN Y RWY 14

TACAN NBC Chan 42	APCH CRS 127°	Rwy ldg TDZE Arpt Elev 8000 32 37	[USN]	BEAUFORT MCAS (MERRITT FLD)	(KNBC)
RADAR required		MISSED APPROACH: Climb to 1600 on NBC TACAN R-120, then climbing left turn to 3000 via hdg 330° to intercept NBC R-041 to 6 DME (COSAW) and hold. Continue climb in hold to 3000.			

ATIS ★ 279.525	APP CON 125.125 292.125 (ABV 3000) 123.7 269.125 (3000 and BLW)	TOWER ★ 119.05 342.875	GND CON 128.15 348.625	CLNC DEL 128.15 254.375	ASR/PAR
--------------------------	---	----------------------------------	----------------------------------	-----------------------------------	---------



ELEV 37	TDZE 32
HIRL Rwy 5-23 and 14-32	



CATEGORY	C	D	E
S-14	420-1½	388	(400-1½)
CIRCLING	580-1½ 543 (600-1½)	600-2 563 (600-2)	740-2½ 703 (800-2½)

BEAUFORT, SOUTH CAROLINA 32° 29' N-80° 43' W BEAUFORT MCAS (MERRITT FLD) (KNBC)
Amdt 4 11JUL24

HI-TACAN Y RWY 14

SE-2, 20 MAR 2025 to 17 APR 2025

SE-2, 20 MAR 2025 to 17 APR 2025