

BEAUFORT, SOUTH CAROLINA

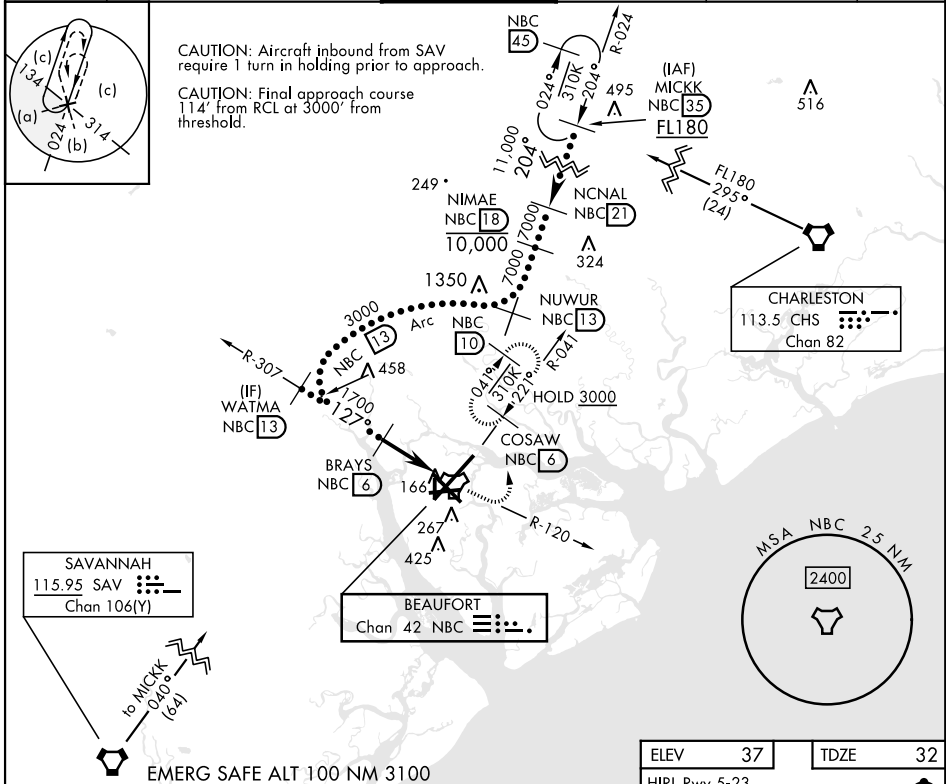
HI-TACAN Z RWY 14

TACAN NBC Chan 42	APCH CRS 127°	Rwy Idg 8000 TDZE 32 Arprt Elev 37	[USN]	BEAUFORT MCAS (MERRITT FLD) (KNBC)
-----------------------------	-------------------------	---	-------	------------------------------------

RADAR required

MISSED APPROACH: Climb to 1600 on NBC TACAN R-120, then climbing left turn to 3000 via hdg 330° to intercept NBC R-041 to 6 DME (COSAW) and hold. Continue climb in hold to 3000.

ATIS ★ 279.525	APP CON (ABV 3000) 125.125 292.125 (3000 and BLW) 123.7 269.125	TOWER ★ 119.05 342.875	GND CON 128.15 348.625	CLNC DEL 128.15 254.375	ASR/PAR
--------------------------	---	----------------------------------	----------------------------------	-----------------------------------	---------



SE-2, 20 MAR 2025 to 17 APR 2025

SE-2, 20 MAR 2025 to 17 APR 2025

ELEV 37	TDZE 32		
HIRL Rwy 5-23 and 14-32			
WATMA NBC 13	BRAYS NBC 6	NBC TACAN	
3000	1700	WUSAL NBC 13	
2.94° TCH 40		0.7	
4.5 NM			
1600 NBC R-120	3000 hdg 330°	COSAW NBC 6	
CATEGORY	C	D	E
S-14	420-1½	388	(400-1½)
CIRCLING	580-1½ 543 (600-1½)	600-2 563 (600-2)	740-2½ 703 (800-2½)

BEAUFORT, SOUTH CAROLINA 32° 29' N-80° 43' W BEAUFORT MCAS (MERRITT FLD) (KNBC)

Amtd 4 11JUL24

HI-TACAN Z RWY 14