

RNAV (GPS) RWY 23

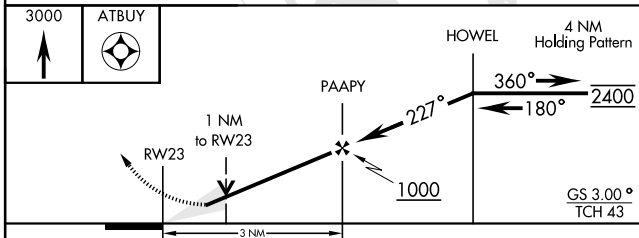
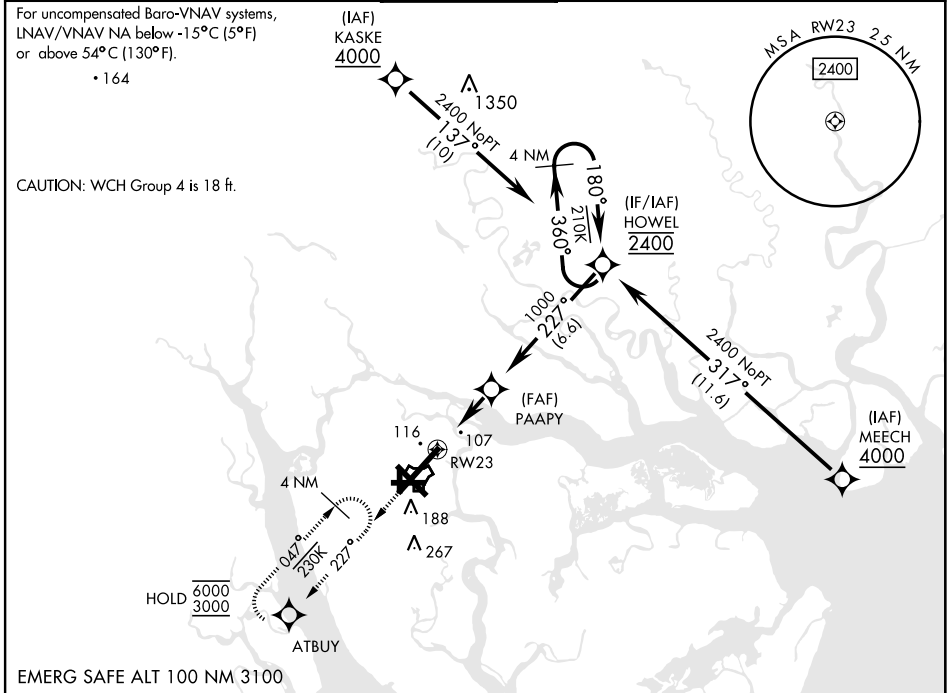
WAAS Chan 93379 W23A	APCH CRS 227°	Rwy Idg 12,202 TDZE 16 Arprt Elev 37
--	-------------------------	---

[USN]

BEAUFORT MCAS (MERRITT FLD) (KNBC)

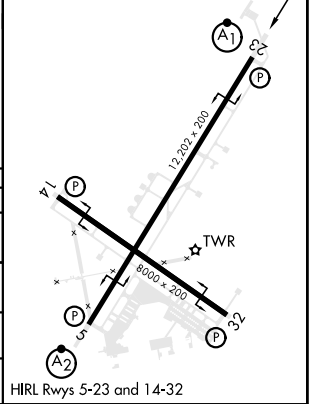
RNP APCH	ALSIF-1 	MISSED APPROACH: Climb to 3000 direct ATBUY and hold. Continue climb in hold to 3000.
RADAR required.		
▼ **When ALS inop, increase vis to 3/4 mile. ▼ **When ALS inop, increase vis to 1 mile.		

ATIS ★ 279.525	APP CON 125.125 292.125 (ABV 3000) 123.7 269.125 (3000 and BLW)	TOWER ★ 119.05 342.875	GND CON 128.15 348.625	CLNC DEL 128.15 254.375	ASR/ PAR
--------------------------	---	----------------------------------	----------------------------------	-----------------------------------	-------------



ELEV	37	TDZE	16
------	----	------	----

CATEGORY	A	B	C	D
LPV DA *	216-1/2		200	(200-1/2)
LNAV/VNAV DA **	380-5/8		364	(400-3/8)
LNAV MDA **	380-1/2	364 (400-1/2)	380-3/4	364 (400-3/4)
CIRCLING	560-1	523 (600-1)	580-1 1/2 543 (600-1 1/2)	600-2 563 (600-2)



RNAV (GPS) RWY 23

SE-2, 20 MAR 2025 to 17 APR 2025

SE-2, 20 MAR 2025 to 17 APR 2025