

# RNAV (GPS) RWY 32

WAAS Chan <b>95233</b> <b>W32A</b>	APCH CRS <b>320°</b>	Rwy Idg TDZE Arprt Elev <b>8000</b> <b>25</b> <b>37</b>
--	-------------------------	--

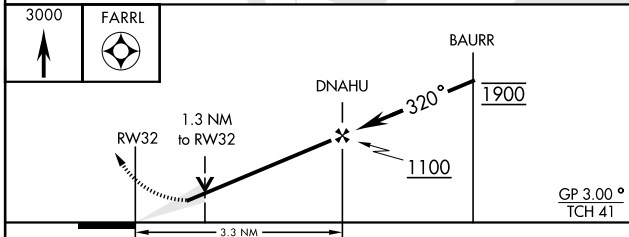
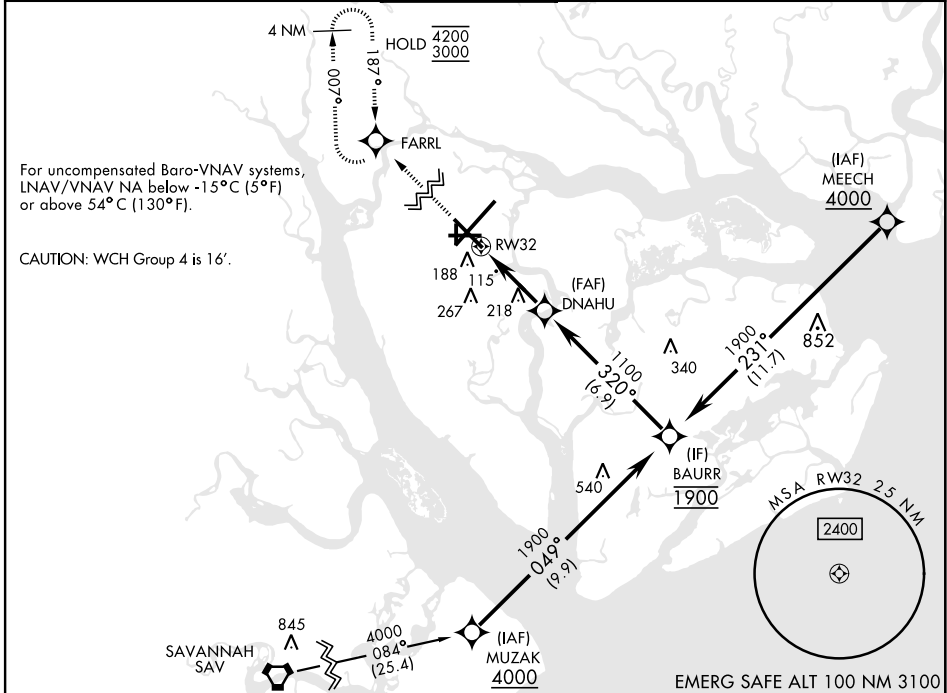
[USN]

BEAUFORT MCAS (MERRITT FLD) (KNBC)

RNP APCH

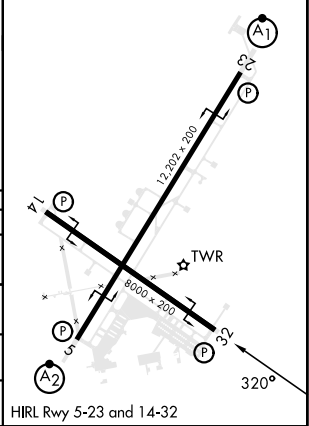
MISSED APPROACH: Climb to 3000 direct FARRL and hold, continue climb in hold to 3000.

ATIS ★ <b>279.525</b>	APP CON <b>125.125 292.125</b> <b>123.7 269.125</b>	ABV 3000 3000 and BLW	TOWER ★ <b>119.05 342.875</b>	GND CON <b>128.15 348.625</b>	CLNC DEL <b>128.15 254.375</b>	ASR/ PAR
--------------------------	---	--------------------------	----------------------------------	----------------------------------	-----------------------------------	-------------



ELEV 37	TDZE 25
---------	---------

CATEGORY	A	B	C	D
LPV DA	312-7/8		287	(300-7/8)
LNAV/VNAV DA	389-1		364	(400-1)
LNAV MDA	480-1	455 (500-1)	480-1 3/8	455 (500-1 3/8)
CIRCLING	560-1	523 (600-1)	580-1 1/2	600-2
			543 (600-1 1/2)	563 (600-2)



# RNAV (GPS) RWY 32

SE-2, 20 MAR 2025 to 17 APR 2025

SE-2, 20 MAR 2025 to 17 APR 2025