

# TACAN RWY 14

TACAN NBC Chan <b>42</b>	APCH CRS <b>127°</b>	Rwy ldg TDZE Arprt Elev <b>8000</b> <b>32</b> <b>37</b>
-----------------------------	-------------------------	--

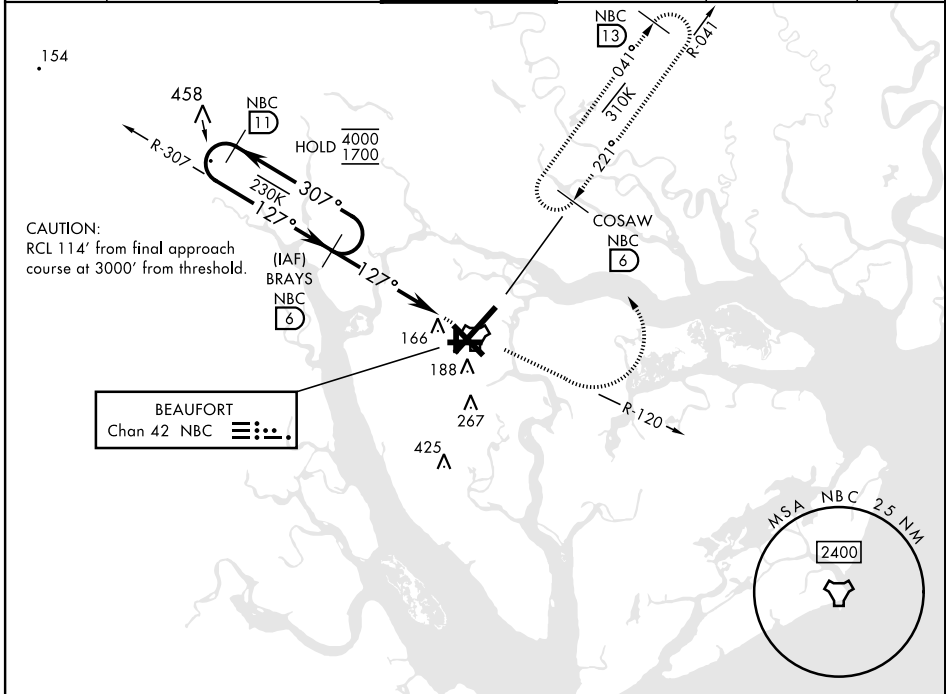
[USN]

BEAUFORT MCAS (MERRITT FLD) (KNBC)

RADAR required

MISSED APPROACH: Climb to 1600 on NBC TACAN R-120, then climbing left turn to 3000 via hdg 330° to intercept NBC R-041 to 6 DME (COSAW) and hold. Continue climb in hold to 3000.

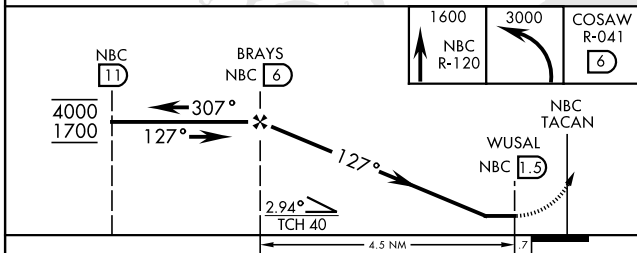
ATIS★ <b>279.525</b>	APP CON <b>125.125 292.125</b> (ABV 3000) <b>123.7 269.125</b> (3000 and BLW)	TOWER★ <b>119.05 342.875</b>	GND CON <b>128.15 348.625</b>	CLNC DEL <b>128.15 254.375</b>	ASR/PAR
-------------------------	---	---------------------------------	----------------------------------	-----------------------------------	---------



SE-2, 20 MAR 2025 to 17 APR 2025

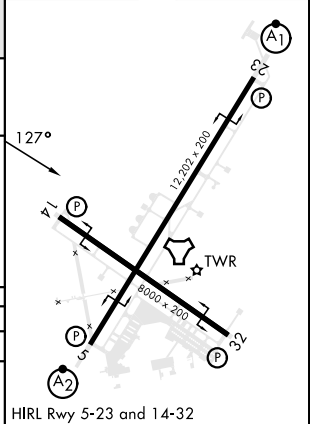
SE-2, 20 MAR 2025 to 17 APR 2025

EMERG SAFE ALT 100 NM 3100



ELEV	37	TDZE	32
------	----	------	----

CATEGORY	A	B	C	D	E
S-14	420-1 388 (400-1)		420-1½ 388 (400-1½)		
CIRCLING	560-1 523 (600-1)		580-1½ 543 (600-1½)	600-2 563 (600-2)	740-2½ 703 (800-2½)



# TACAN RWY 14