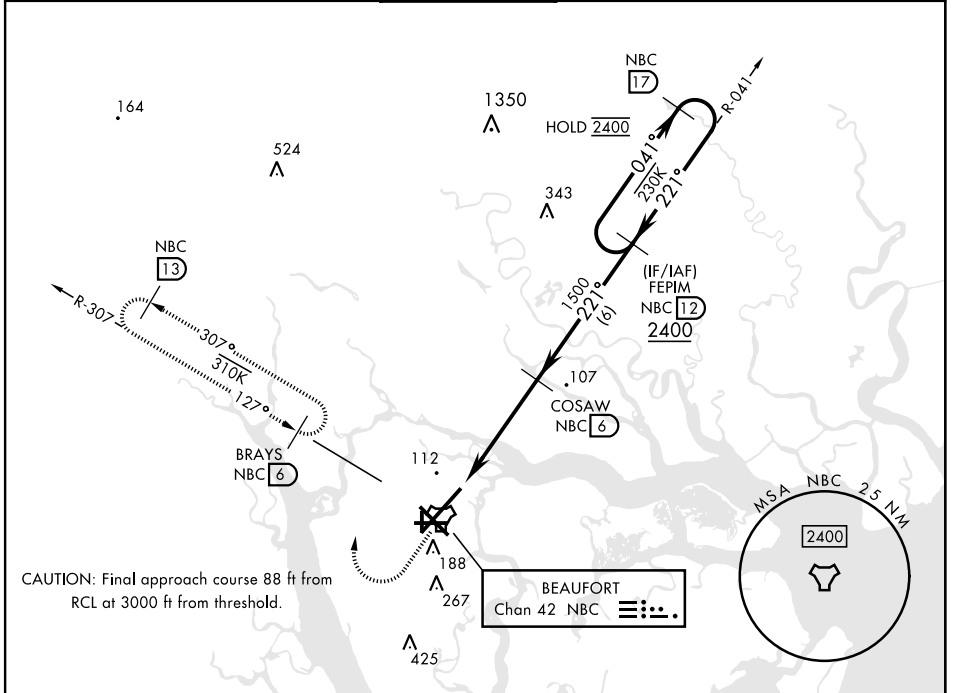
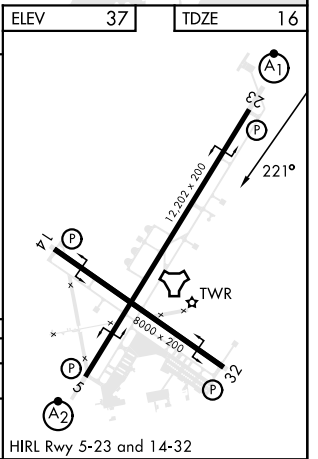
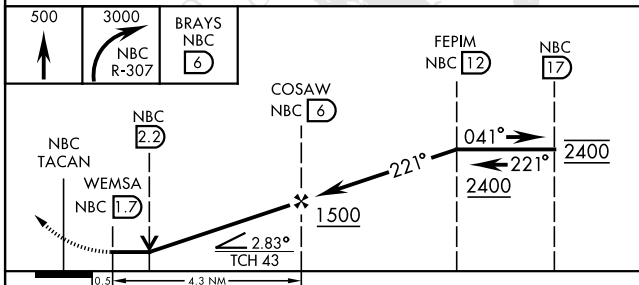


TACAN RWY 23

TACAN NBC Chan 42	APCH CRS 221°	Rwy ldg 12,202 TDZE 16 Arprt Elev 37	[USN]	BEAUFORT MCAS (MERRITT FLD) (KNBC)		
RADAR required			ALSIF-1 	MISSED APPROACH: Climb to 500, then climbing right turn to 3000, join NBC TACAN R-307 direct BRAYS and hold. Continue climb in hold to 3000.		
*When ALS inop, increase vis to 1 mile.						
ATIS ★ 279.525	APP CON 125.125 292.125 (ABV 3000) 123.7 269.125 (3000 and BLW)		TOWER ★ 119.05 342.875	GND CON 128.15 348.625	CLNC DEL 128.15 254.375	ASR/PAR



EMERG SAFE ALT 100 NM 3100	ELEV 37	TDZE 16
----------------------------	---------	---------



CATEGORY	A	B	C	D	E
S-23 *	380-1/2 364 (400-1/2)	380-3/4 364 (400-3/4)	380-1/2 543 (600-1/2)	600-2 563 (600-2)	740-2 703 (800-2)
C CIRCLING	560-1 523 (600-1)	580-1/2 543 (600-1/2)	600-2 563 (600-2)	740-2 703 (800-2)	

TACAN RWY 23

SE-2, 20 MAR 2025 to 17 APR 2025

SE-2, 20 MAR 2025 to 17 APR 2025