

# TACAN RWY 32

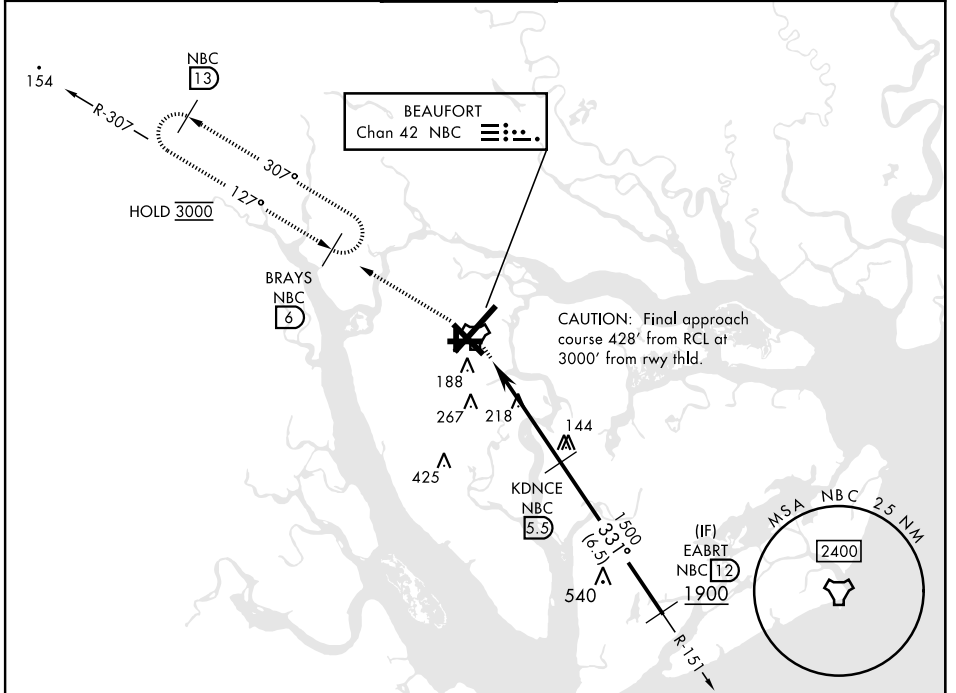
TACAN Chan <b>42</b>	NBC <b>331°</b>	APCH CRS <b>331°</b>	Rwy Idg TDZE Arprt Elev <b>8000</b> <b>25</b> <b>37</b>
-------------------------	--------------------	-------------------------	--

[USN]

BEAUFORT MCAS (MERRITT FLD) (KNBC)

**MISSED APPROACH:** Climb to 3000 on NBC TACAN R-307 to BRAYS and hold. Continue climb in hold to 3000.

ATIS ★ <b>279.525</b>	APP CON <b>125.125 292.125</b> (ABV 3000) <b>123.7 269.125</b> (3000 and BLW)	TOWER ★ <b>119.05 342.875</b>	GND CON <b>128.15 348.625</b>	CLNC DEL <b>128.15 254.375</b>	ASR/PAR
--------------------------	---	----------------------------------	----------------------------------	-----------------------------------	---------



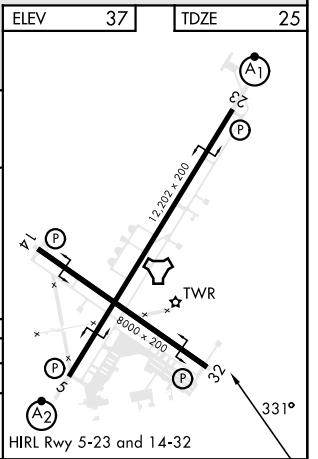
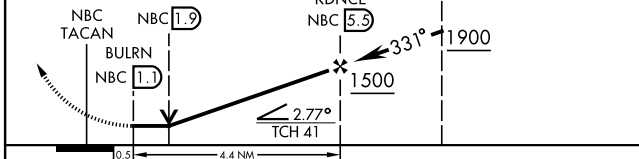
SE-2, 20 MAR 2025 to 17 APR 2025

SE-2, 20 MAR 2025 to 17 APR 2025

ELEV	37	TDZE	25
------	----	------	----

EMERG SAFE ALT 100 NM 3100

VGSI and descent angles not coincident (VGSI Angle 3.00/TCH 41).



CATEGORY	A	B	C	D	E
S-32	480-1 455 (500-1)		480-1 5/8	455 (500-1 1/2)	
CIRCLING	560-1 523 (600-1)		580-1 1/2 543 (600-1 1/2)	600-2 563 (600-2)	740-2 1/2 703 (800-2 1/2)

BEAUFORT, SOUTH CAROLINA 32°29'N-80°43'W BEAUFORT MCAS (MERRITT FLD) (KNBC)

Amdt 1 11JUL24

# TACAN RWY 32