


LOC/DME I-EAU 109.5 Chan 32	APP CRS 224°	Rwy Idg 7301 TDZE 913 Apt Elev 913
---	------------------------	---

ILS or LOC RWY 22

CHIPPEWA VALLEY RGNL (EAU)

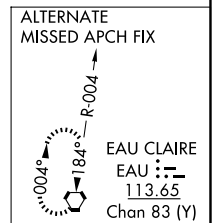
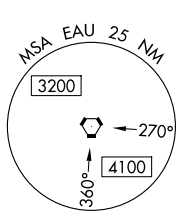
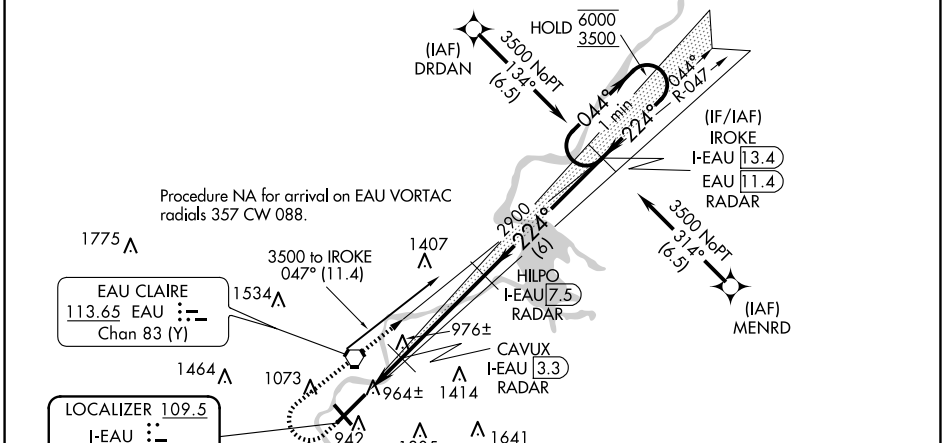
From DRDAN and MENRD RNAV-1 GPS required.
DME or RADAR required.

⚠ For inop ALS increase S-LOC 22 Cat C and D visibility to $\frac{7}{8}$ SM. For inop ALS when using Rice Lake altimeter setting, increase S-ILS 22 all Cats visibility to 1 SM. When local altimeter setting not received, use Rice Lake altimeter setting and increase DA 110 feet and all MDA 120 feet, increase S-LOC 22 Cat C and D and Circling Cat C visibility $\frac{1}{4}$ SM. VDP NA when using Rice Lake altimeter setting.

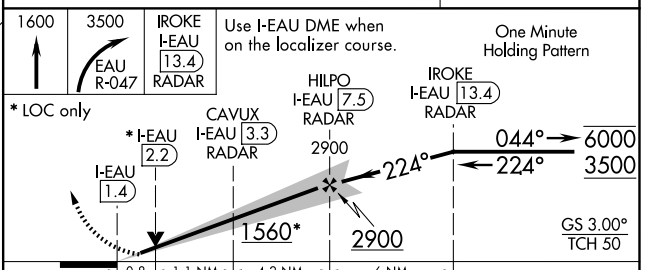
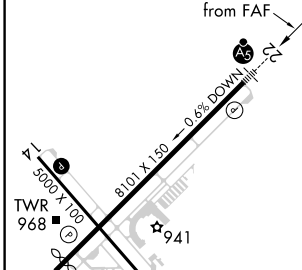
MALSR 

MISSED APPROACH: Climb to 1600 then climbing right turn to 3500 on EAU VORTAC R-047 to IROKE/I-EAU LOC/DME 13.4 DME/RADAR and hold.

ATIS 126.025	MINNEAPOLIS CENTER 125.3 335.6	EAU CLAIRE TOWER ★ 118.575 (CTAF) 0	GND CON 120.925	UNICOM 122.95
------------------------	--	---	---------------------------	-------------------------



ELEV 913	D	TDZE 913
HIRL Rwy 4-22		
MIRL Rwy 14-32		
REIL Rwy 4 and 14		
	224° 6.1 NM	from FAF



FAF to MAP 6.1 NM					
Knots	60	90	120	150	180
Min:Sec	6:06	4:04	3:03	2:26	2:02
CIRCLING	1480-1 567 (600-1)	1540-1 627 (700-1)	1660-2½ 747 (800-2½)	2200-3 1287 (1300-3)	

EC-3, 20 MAR 2025 to 17 APR 2025

EC-3, 20 MAR 2025 to 17 APR 2025