

LOC/DME I-EAU	APP CRS	Rwy Idg	<b>7701</b>
<b>109.5</b>	<b>044°</b>	TDZE	<b>889</b>
Chan <b>32</b>		Apt Elev	<b>913</b>

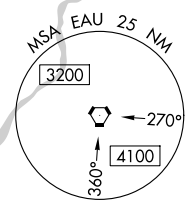
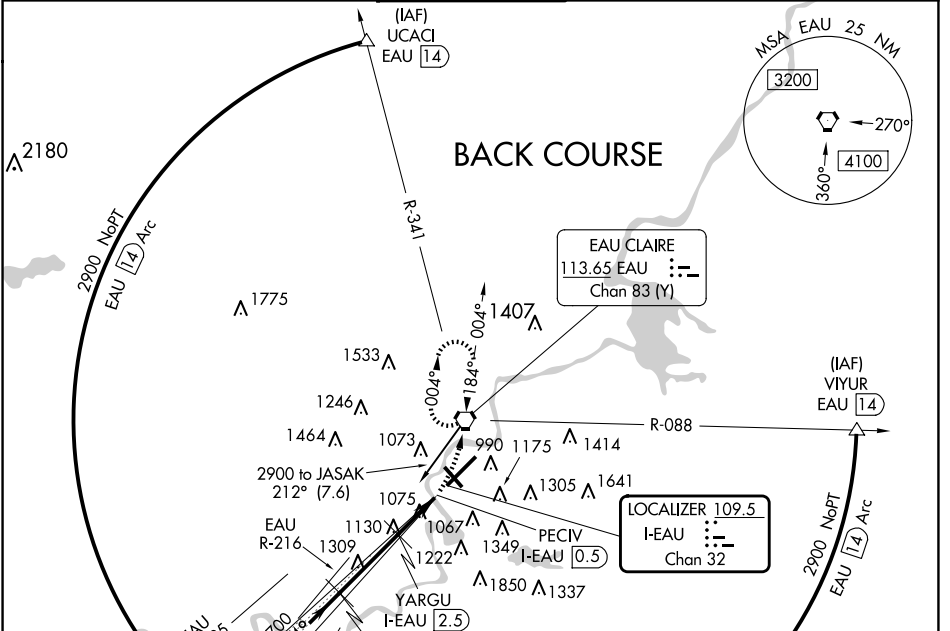
# LOC BC RWY 4

CHIPPEWA VALLEY RGNL (EAU)

**▼** DME required. VDP NA with Rice Lake Rgnl/Carl's Fld airport altimeter setting. When local altimeter setting not received, use Rice Lake Rgnl/Carl's Fld airport altimeter setting increase all MDA 120 feet, increase S-4 Cats C and D and Circling Cat C visibility 1/4 mile. Circling Rwy 32 NA at night.

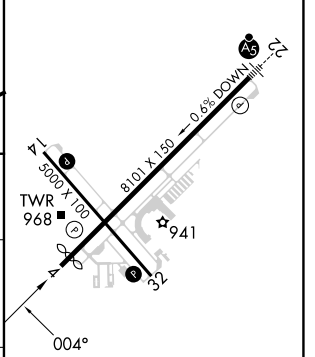
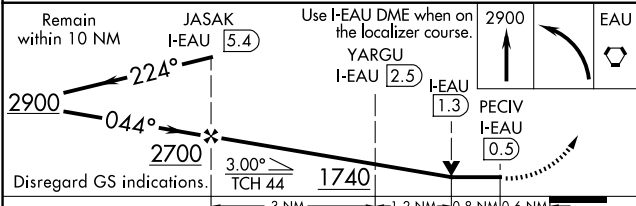
**MISSED APPROACH:** Climb to 2900 then left turn direct EAU VORTAC and hold.

ATIS <b>126.025</b>	MINNEAPOLIS CENTER <b>125.3 335.6</b>	<b>EAU CLAIRE TOWER *</b> <b>118.575 (CTAF) 0</b>	GND CON <b>120.925</b>	UNICOM <b>122.95</b>
------------------------	--	--	---------------------------	-------------------------



**EAU CLAIRE**  
113.65 EAU  
Chan 83 (Y)

ELEV 913	<b>D</b>	TDZE 889
----------	----------	----------



CATEGORY	A	B	C	D
S-4	1380-1	491 (500-1)	1380-1 3/8	491 (500-1 3/8)
<b>C</b> CIRCLING	1480-1 567 (600-1)	1540-1 627 (700-1)	1660-2 1/4 747 (800-2 1/4)	2200-3 1287 (1300-3)

HIRL Rwy 4-22 **0**  
MIRL Rwy 14-32 **0**  
REIL Rws 4 and 14 **0**

EC-3, 20 MAR 2025 to 17 APR 2025

EC-3, 20 MAR 2025 to 17 APR 2025