

(SBOAT1.SBOAT) 24305

AL-939 (FAA-O)

LAKELAND LINDER INTL (LAL)
LAKELAND, FLORIDA

SBOAT ONE DEPARTURE (RNAV)

TAMPA DEP CON
120.65 290.3

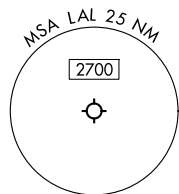
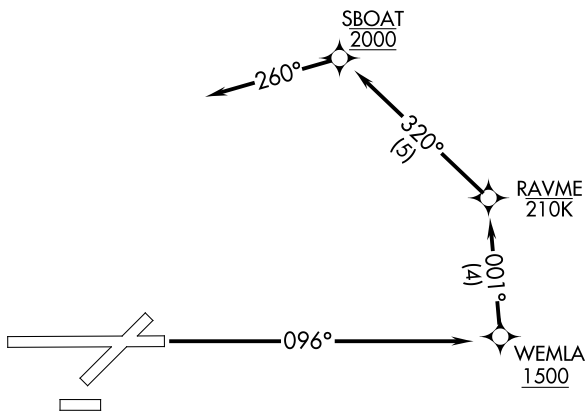
RNAV 1 - GPS.

**TOP ALTITUDE:
2000**

TAKEOFF MINIMUMS

Rwy 5, 8, 23, 26, 28: NA-ATC.

Rwy 10: Standard.



NOTE: Chart not to scale.



DEPARTURE ROUTE DESCRIPTION

TAKEOFF RUNWAY 10: Climbing on heading 096° direct WEMLA, cross WEMLA at or above 1500, then climb and maintain 2000 on track 001° to RAVME, then on track 320° to SBOAT, then on track 260° .

SBOAT ONE DEPARTURE (RNAV)

(SBOAT1.SBOAT) 31OCT24

LAKELAND, FLORIDA
LAKELAND LINDER INTL (LAL)

SE-3, 20 MAR 2025 to 17 APR 2025

SE-3, 20 MAR 2025 to 17 APR 2025