

LOC/DME I-LLM <b>111.7</b> Chan <b>54</b>	APP CRS <b>317°</b>	Rwy Idg <b>7120</b> TDZE <b>102</b> Apt Elev <b>107</b>
---	------------------------	---

# ILS or LOC RWY 32

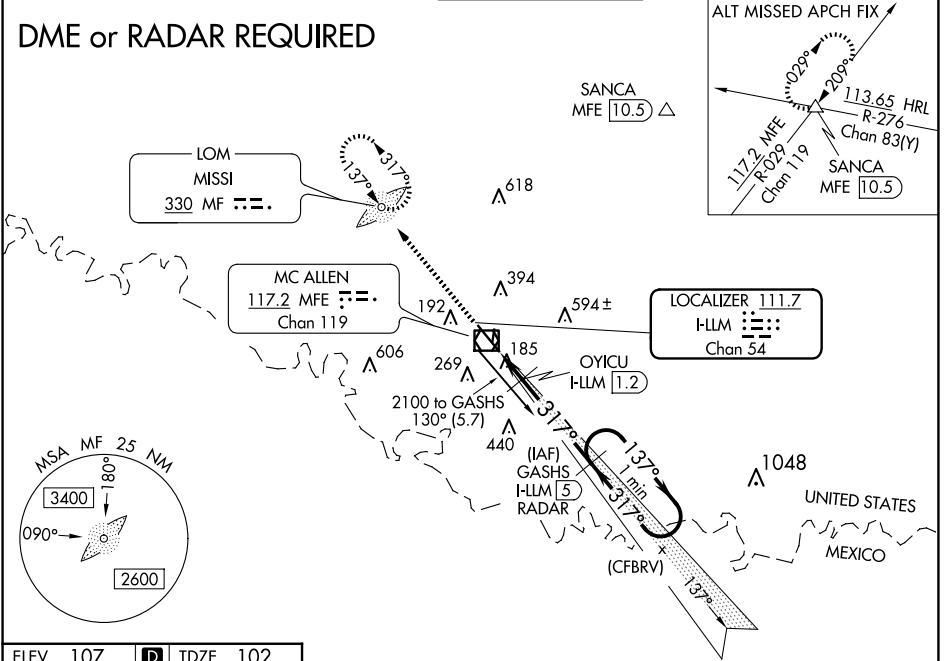
MC ALLEN INTL (MF'E)

**⚠** Circling NA northeast of Rwy 14-32. ADF and DME or Radar required. When local altimeter setting not received, use Weslaco altimeter setting: increase all DA 39 feet and MDA 40 feet.

MISSED APPROACH: Climb to 2100 direct MF LOM and hold

ATIS <b>128.5</b>	VALLEY APP CON <b>126.55 377.2</b>	MC ALLEN TOWER ★ <b>118.5 (CTAF) 0 256.9</b>	GND CON <b>121.8</b>	UNICOM <b>122.95</b>
----------------------	---------------------------------------	---	-------------------------	-------------------------

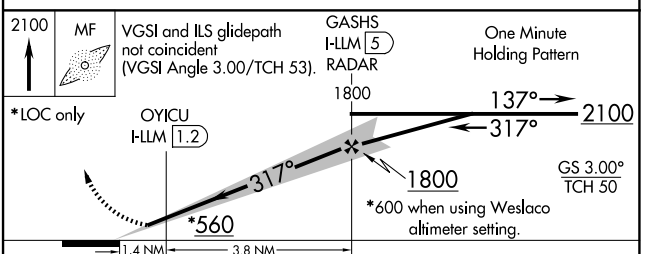
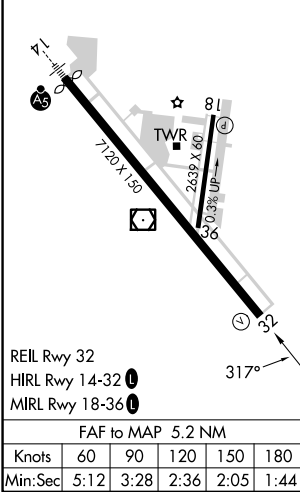
## DME or RADAR REQUIRED



SC-3, 20 MAR 2025 to 17 APR 2025

SC-3, 20 MAR 2025 to 17 APR 2025

ELEV 107	<b>D</b>	TDZE 102
----------	----------	----------



CATEGORY	A	B	C	D
S-ILS 32	302-3/4		200 (200-3/4)	
S-LOC 32	560-1	458 (500-1)	560-1 3/8	458 (500-1 1/8)
<b>C</b> CIRCLING	580-1	473 (500-1)	580-1 1/2	800-2 1/4 693 (700-2 1/4)
OYICU FIX MINIMUMS				
S-LOC 32	440-1		338 (400-1)	
<b>C</b> CIRCLING	580-1	473 (500-1)	580-1 1/2	800-2 1/4 693 (700-2 1/4)