


LOC I-HOV 110.5	APP CRS 196°	Rwy Idg 10302 TDZE 1330 Apt Elev 1333
---------------------------	------------------------	--

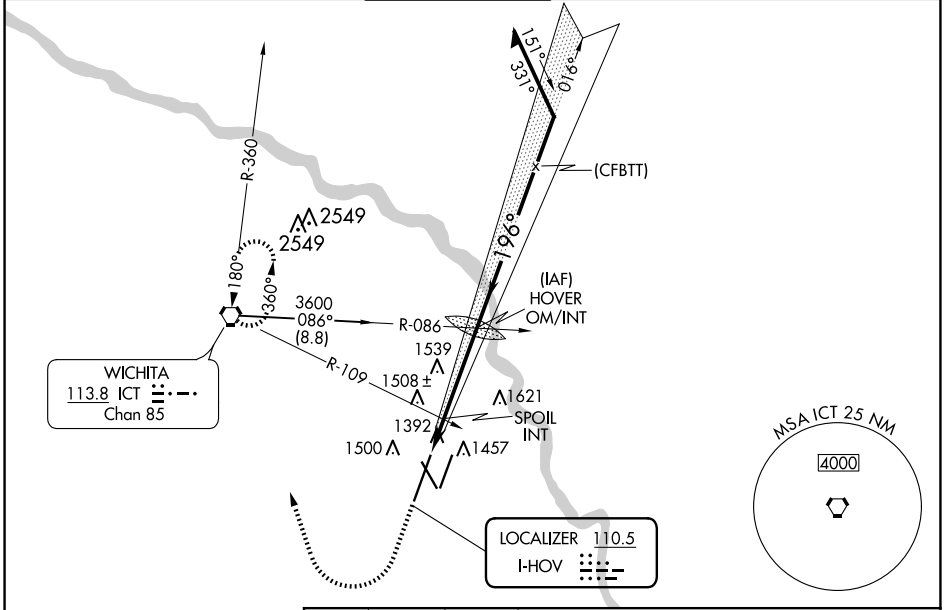
ILS or LOC RWY 19R

WICHITA DWIGHT D EISENHOWER NTL (ICT)

Simultaneous approach authorized with Rwy 19L. For inoperative MALSR, increase S-ILS 19R# Cat E visibility to RVR 4000, S-LOC 19R Cat E visibility to 1/2 mile, SPOIL FIX minimums: S-LOC 19R Cat D and E visibility to RVR 5000.
RVR 1800 authorized with the use of FD or AP or HUD to DA.

MALSR

MISSED APPROACH: Climb to 3500 then climbing right turn to 3600 direct ICT VORTAC and hold.

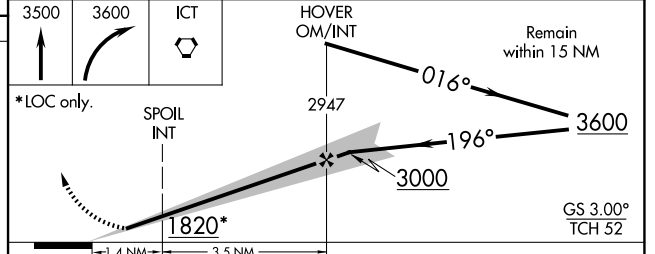
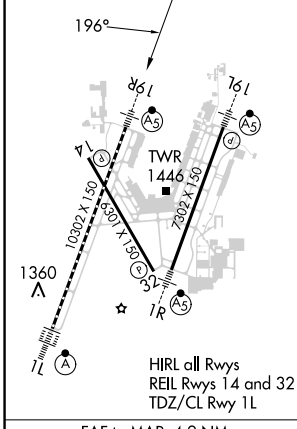
ATIS 125.15	WICHITA APP CON 126.7 353.5	WICHITA TOWER 118.2 257.8	GND CON 121.9 348.6	CLNC DEL 125.7
-----------------------	---------------------------------------	-------------------------------------	-------------------------------	--------------------------



NC-2, 20 MAR 2025 to 17 APR 2025

NC-2, 20 MAR 2025 to 17 APR 2025

ELEV 1333	D	TDZE 1330
-----------	----------	-----------



CATEGORY	A	B	C	D	E
S-ILS 19R#	1530/24 200 (200-1/2)				
S-LOC 19R	1820/24 490 (500-1/2)	1820/40 490 (500-3/4)	1820/50 490 (500-1)	1820/60 490 (500-1 1/4)	
CIRCLING	1820-1 487 (500-1)	1980-1 3/4 647 (700-1 3/4)	1980-2 647 (700-2)	2000-2 1/4 667 (700-2 1/4)	
SPOIL FIX MINIMUMS (DUAL VOR RECEIVERS REQUIRED)					
S-LOC 19R	1660/24 330 (400-1/2)		1660/40 330 (400-3/4)		
CIRCLING	1800-1 467 (500-1)	1980-1 3/4 647 (700-1 3/4)	1980-2 647 (700-2)	2000-2 1/4 667 (700-2 1/4)	

FAF to MAP 4.9 NM

Knots	60	90	120	150	180
Min:Sec	4:54	3:16	2:27	1:58	1:38

WICHITA, KANSAS
 Amdt 5H 30DEC21

WICHITA DWIGHT D EISENHOWER NTL (ICT)
ILS or LOC RWY 19R
 37°39'N-97°26'W