

APP CRS	Rwy Idg	6301
146°	TDZE	1333
	Apt Elev	1333

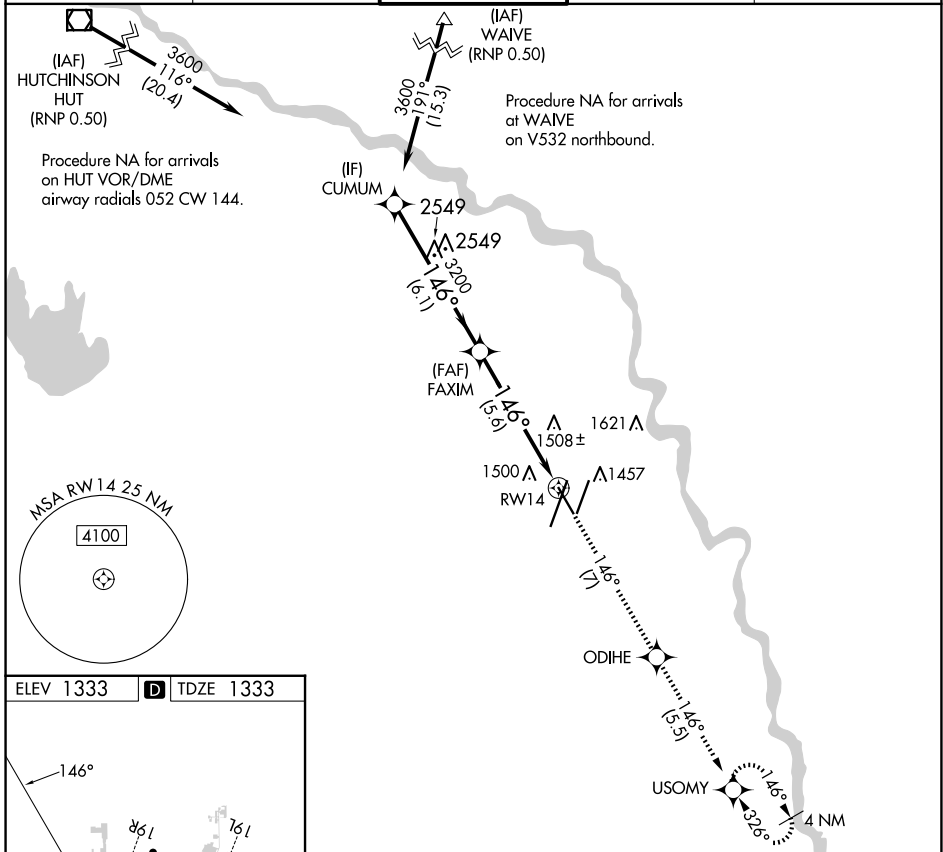
RNAV (RNP) Z RWY 14

WICHITA DWIGHT D EISENHOWER NTL (ICT)

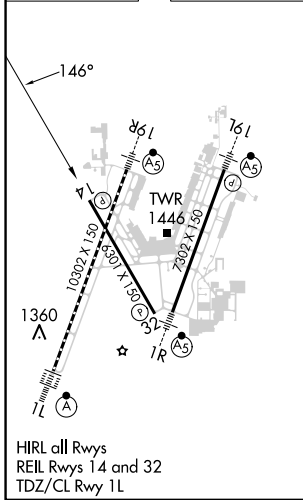
▽ For uncompensated Baro-VNAV systems, procedure NA below -15°C (5°F) or above 54°C (130°F). GPS required.

MISSED APPROACH: Climb to 3600 on track 146° to ODIHE and on track 146° to USOMY and hold.

ATIS 125.15	WICHITA APP CON 126.7 353.5	WICHITA TOWER 118.2 257.8	GND CON 121.9 348.6	CLNC DEL 125.7
-----------------------	---------------------------------------	-------------------------------------	-------------------------------	--------------------------



ELEV 1333	D	TDZE 1333
-----------	----------	-----------



VGSi and RNAV glidepath not coincident (VGSi Angle 3.00/TCH 50).		3600	ODIHE	tr 146°	USOMY
CUMUM	FAXIM				
3600	3200				
GP 3.00° TCH 50					
	6.1 NM	5.6 NM			
CATEGORY	A	B	C	D	
RNP 0.11 DA	1682-1 1/8		349 (400-1 1/8)		
RNP 0.30 DA	1732-1 1/8		399 (400-1 1/8)		

AUTHORIZATION REQUIRED

NC-2, 20 MAR 2025 to 17 APR 2025

NC-2, 20 MAR 2025 to 17 APR 2025