

RNAV (RNP) Z RWY 19R

WICHITA DWIGHT D EISENHOWER NTL (ICT)

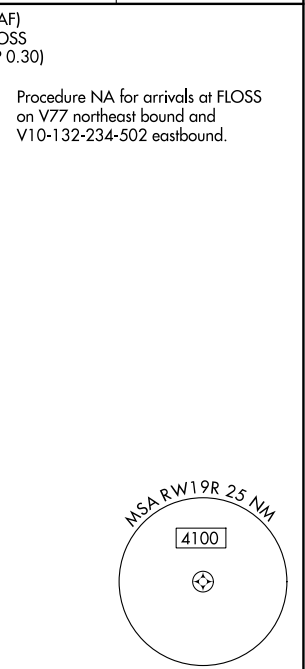
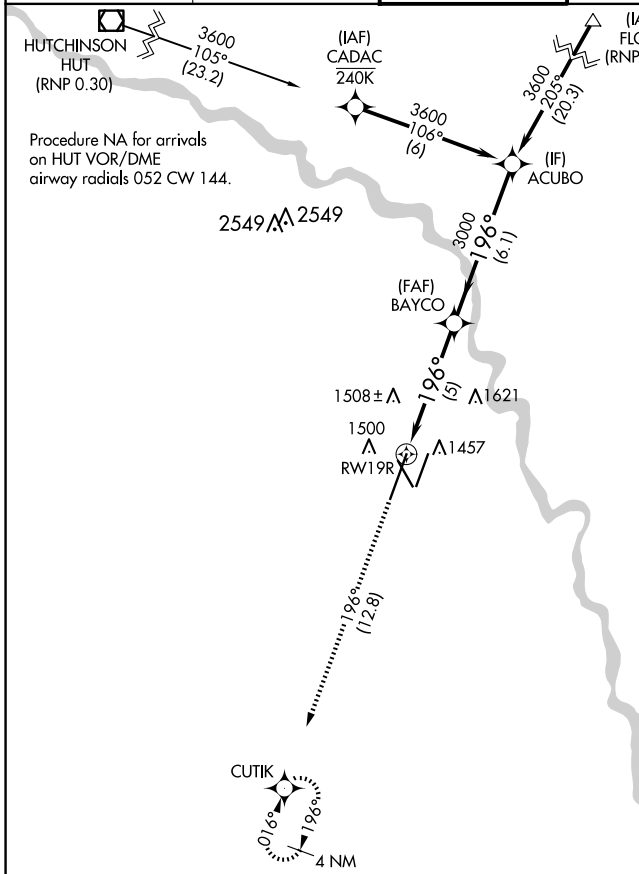
APP CRS	Rwy Idg	10302
196°	TDZE	1330
	Apt Elev	1333

▼ For uncompensated Baro-VNAV systems, procedure NA below -15°C (5°F) or above 54°C (130°F). For inoperative MALS, increase all Cats visibility to 1 ¼ mile. GPS required.

MALS R

MISSED APPROACH: Climb to 4200 on track 196° to CUTIK and hold.

ATIS 125.15	WICHITA APP CON 126.7 353.5	WICHITA TOWER 118.2 257.8	GND CON 121.9 348.6	CLNC DEL 125.7
-----------------------	---------------------------------------	-------------------------------------	-------------------------------	--------------------------



4200	CUTIK	BAYCO	ACUBO
↑	fr 196°	3000	3600
RWY 19R		3000	GP 3.00° TCH 52
	5 NM	6.1 NM	
CATEGORY	A	B	C
RNP 0.30 DA	1727/50		397 (400-1)
AUTHORIZATION REQUIRED			

HIRL all Rwws
REIL Rwws 14 and 32
TDZ/CL Rwy 1L

NC-2, 20 MAR 2025 to 17 APR 2025

NC-2, 20 MAR 2025 to 17 APR 2025