

WAAS CH 49119 W19B	APP CRS 196°	Rwy Idg TDZE Apt Elev	7302 1320 1333
--	------------------------	-----------------------------	---

RNAV (GPS) Y RWY 19L

WICHITA DWIGHT D EISENHOWER NTL (ICT)

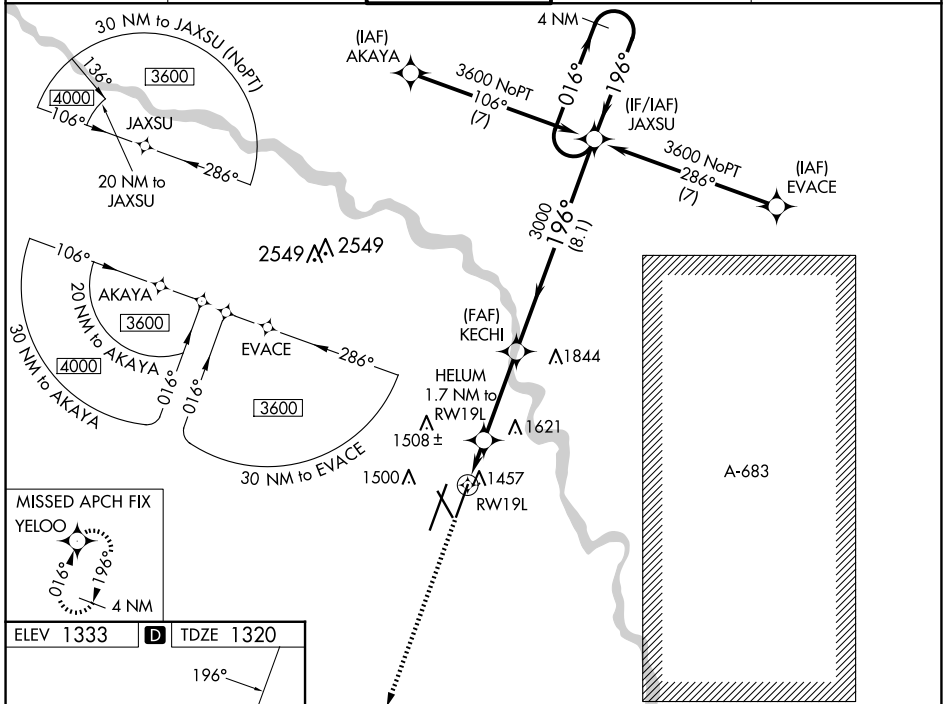
RNP APCH.

▼ For uncompensated Baro-VNAV systems, LNAV/VNAV NA below -15°C (5°F) or above 54°C (130°F). Simultaneous approach authorized with ILS or LOC RWY 19R. LNAV procedure NA during simultaneous operations. Use of FD or AP providing RNAV track guidance required during simultaneous operations.



MISSED APPROACH:
Climb to 3600 direct YELOO and hold.

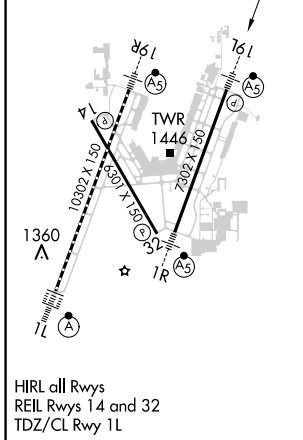
ATIS 125.15	WICHITA APP CON 126.7 353.5	WICHITA TOWER 118.2 257.8	GND CON 121.9 348.6	CLNC DEL 125.7
-----------------------	---------------------------------------	-------------------------------------	-------------------------------	--------------------------



NC-2, 20 MAR 2025 to 17 APR 2025

NC-2, 20 MAR 2025 to 17 APR 2025

ELEV 1333	D	TDZE 1320
-----------	----------	-----------



HIRL all Rwy
REIL Rwy 14 and 32
TDZ/CL Rwy 1L

3600	YELOO	HELLUM 1.7 NM to RW19L	KECHI	JAXSU	4 NM Holding Pattern
*LNAV only.		*1.1 NM to RW19L	3000	3600	GP 3.00° TCH 54
1.1 NM		0.6	3.4 NM	8.1 NM	
CATEGORY	A	B	C	D	
LPV DA	1520-½		200 (200-½)		
LNAV/VNAV DA	1747-¾		427 (500-¾)		
LNAV MDA	1780-½		460 (500-½)		
C CIRCLING	1800-1		467 (500-1)		
			1980-1¾		1980-2
		647 (700-1¾)		647 (700-2)	

WICHITA, KANSAS
Amdt 2A 24MAY18