

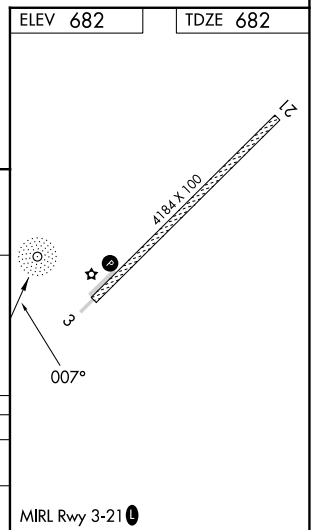
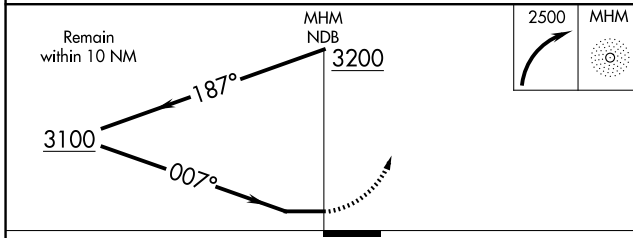
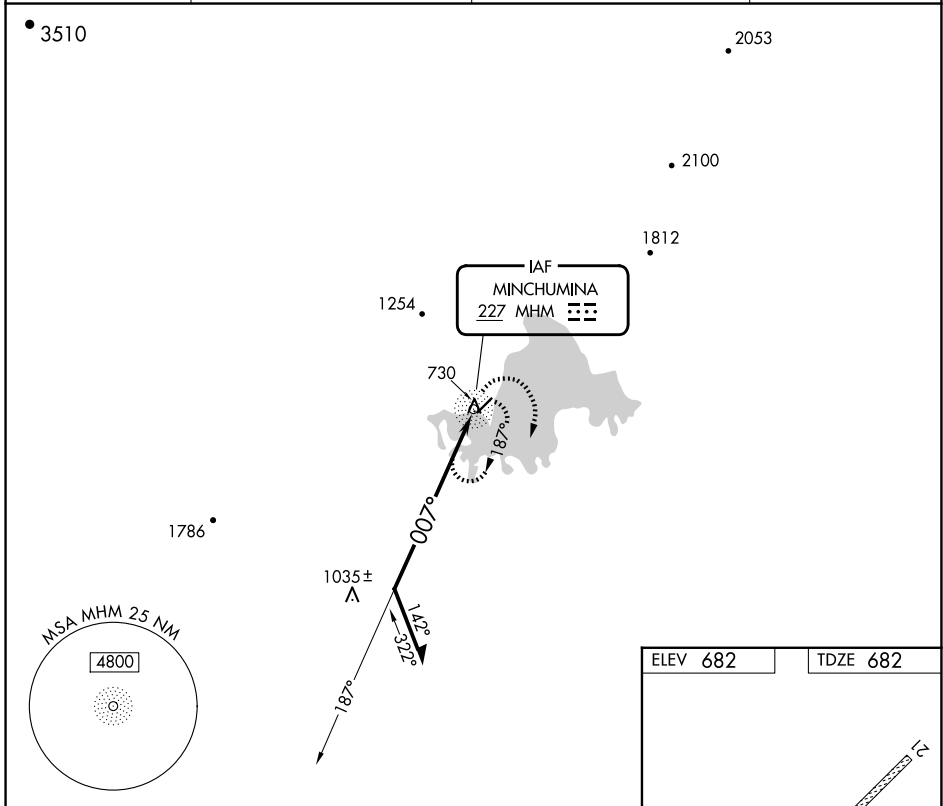
NDB MHM <b>227</b>	APP CRS <b>007°</b>	Rwy Idg <b>4184</b>
		TDZE <b>682</b>
		Apt Elev <b>682</b>

# NDB RWY 3

MINCHUMINA (MHM) (P.A.M.H)

	Circling NA west of Rwy 3-21.	MISSED APPROACH: Climbing right turn to 2500 in MHM NDB holding pattern.
--	-------------------------------	--

AWOS-3P <b>135.55</b>	ANCHORAGE CENTER <b>120.9 319.2</b>	FAIRBANKS RADIO <b>122.2</b>	CTAF <b>122.9</b>
--------------------------	--	---------------------------------	----------------------



CATEGORY	A	B	C	D
S-3	1600-1¼ 918 (1000-1¼)	1600-2¾ 918 (1000-2¾)	1600-3 918 (1000-3)	1600-3 918 (1000-3)
CIRCLING	1600-1¼ 918 (1000-1¼)	1600-2¾ 918 (1000-2¾)	1600-3 918 (1000-3)	1600-3 918 (1000-3)

AK, 20 FEB 2025 to 17 APR 2025

AK, 20 FEB 2025 to 17 APR 2025