

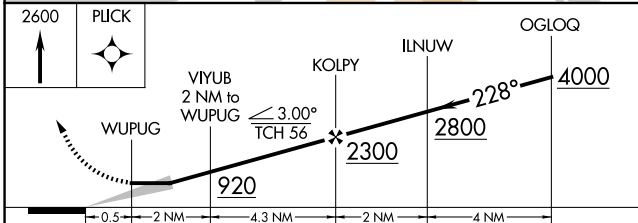
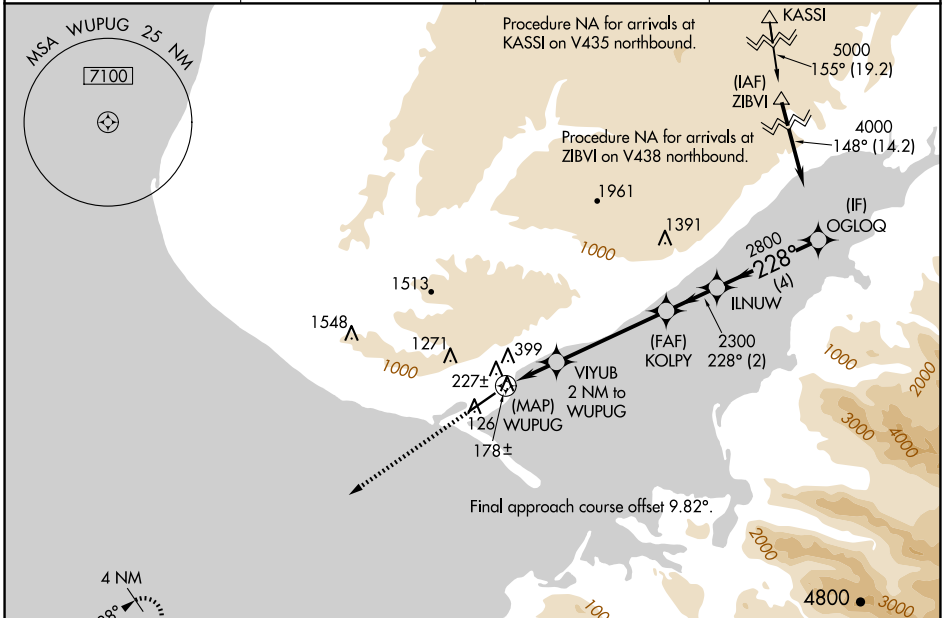
WAAS CH 72633 W22B	APP CRS 228°	Rwy ldg TDZE Apt Elev	6701 84 84
--	------------------------	-----------------------------	---------------------------------------

RNAV (GPS) Y RWY 22

HOMER (HOM) (PAHO)

RNP APCH.	MALSR 	MISSED APPROACH: Climb to 2600 direct PLUCK and hold.
<p>▼ Inop table does not apply to LP and LNAV Cat A/B. Circling NA northwest of Rwy 4-22. Circling NA to waterways 6W and 24W. For inop ALS, increase LP Cat C/D visibility to 1 1/2 SM and LNAV Cat C/D to 1 7/8 SM.</p>		

AFIS 135.65	ANCHORAGE CENTER 125.9 270.3	HOMER RADIO 123.6 (CTAF) 0	UNICOM 122.7 123.0 123.05
-----------------------	--	--------------------------------------	-------------------------------------



AK, 20 FEB 2025 to 17 APR 2025

AK, 20 FEB 2025 to 17 APR 2025