

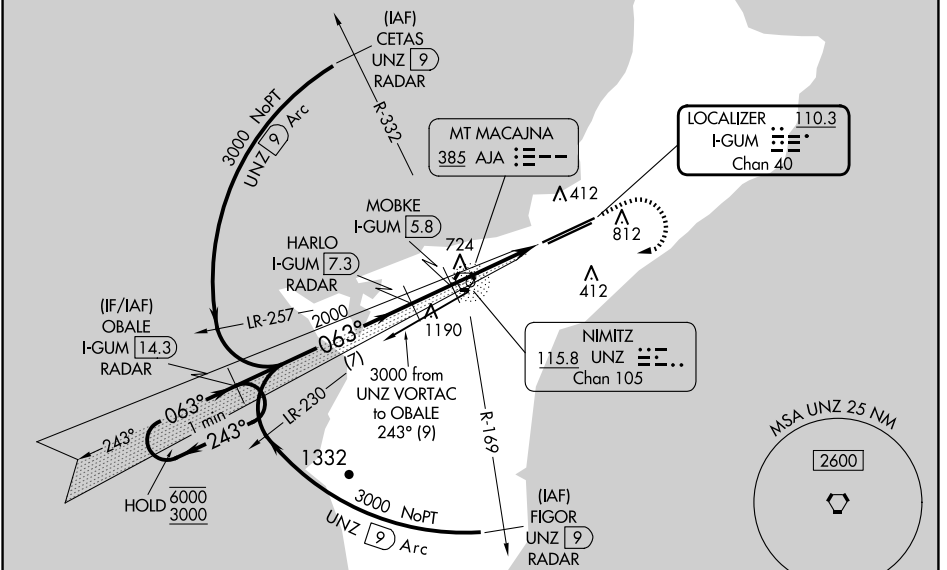
LOC/DME I-GUM <b>110.3</b> Chan 40	APP CRS <b>063°</b>	Rwy ldg <b>11014</b> TDZE <b>256</b> Apt Elev <b>305</b>
--	------------------------	--

# ILS or LOC RWY 6L

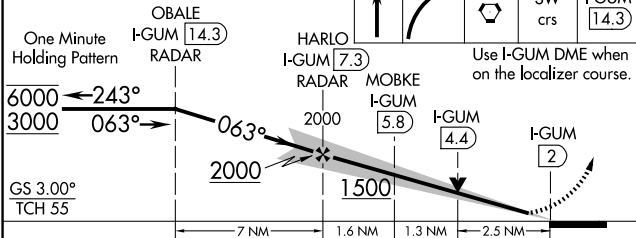
GUAM INTL (GUM)(PGUM)

DME or RADAR required.	MALSR 	MISSED APPROACH: Climb to 2100 then climbing right turn to 3000 direct UNZ VORTAC then on I-GUM localizer SW course to OBALE/I-GUM 14.3 DME/RADAR and hold.
<b>▼</b> Circling NA southeast of Rwy 6R-24L. For inop ALS, increase S-ILS 6L all Cats visibility to 1 SM; MOBKE fix minimums (DME required): For inop ALS, increase S-LOC 6L Cats C and D visibility to 2½ SM. Inop table does not apply to S-LOC 6L Cats C and D.		

ATIS <b>119.0</b>	GUAM CERAP <b>119.8 269.0</b>	AGANA TOWER <b>118.1 340.2</b>	GND CON <b>121.9 336.4</b>	CLNC DEL <b>121.9</b>
----------------------	----------------------------------	-----------------------------------	-------------------------------	--------------------------

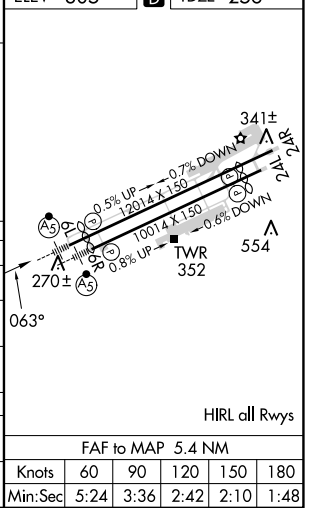


VGSI and ILS glidepath not coincident (VGSI Angle 3.00/TCH 73).



ELEV 305	<b>D</b> TDZE 256
----------	-------------------

CATEGORY	A	B	C	D
S-ILS 6L	590-½ 334 (300-½)			
S-LOC 6L	1500-¾ 1244 (1200-¾)	1500-1 1244 (1200-1)	1500-3	1244 (1200-3)
<b>C</b> CIRCLING	1500-1¼ 1195 (1200-1¼)	1500-1½	1500-3	NA
MOBKE FIX MINIMUMS (DME REQUIRED)				
S-LOC 6L	1100-¾ 844 (800-¾)	1100-2 844 (800-2)		
<b>C</b> CIRCLING	1100-1 795 (800-1)	1100-1¼ 795 (800-1¼)	1100-2½ 795 (800-2½)	NA



PAC, 20 FEB 2025 to 17 APR 2025

PAC, 20 FEB 2025 to 17 APR 2025

HIRL all Rwy's					
FAF to MAP 5.4 NM					
Knots	60	90	120	150	180
Min:Sec	5:24	3:36	2:42	2:10	1:48