

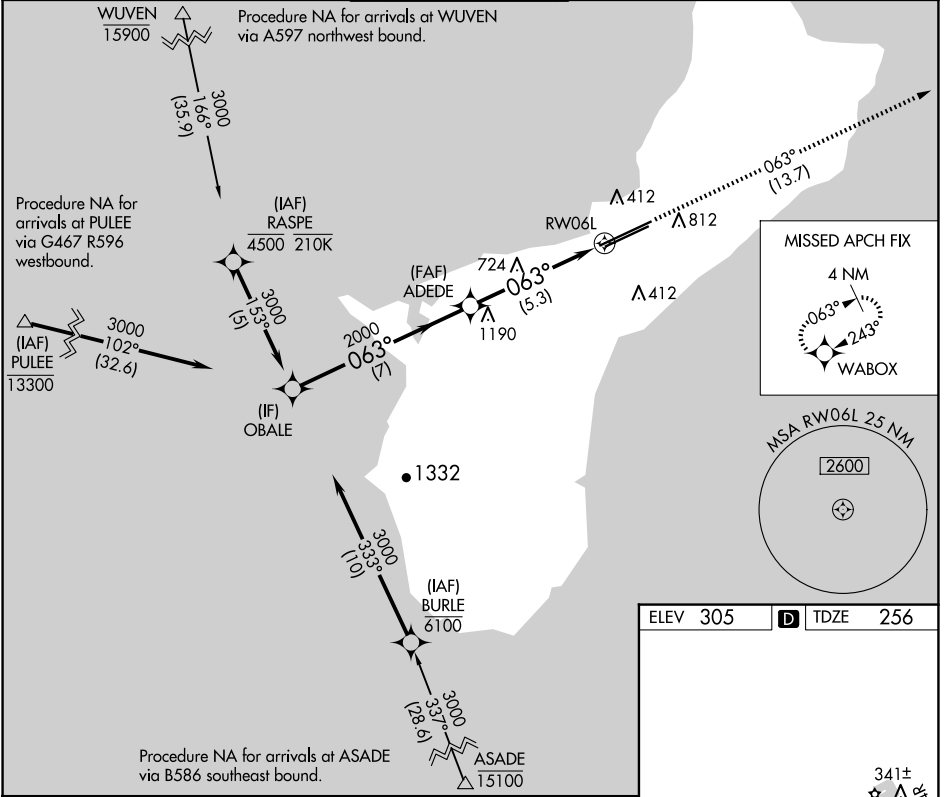
APP CRS 063°	Rwy Idg 11014 TDZE 256 Apt Elev 305
------------------------	--

RNAV (RNP) Z RWY 6L

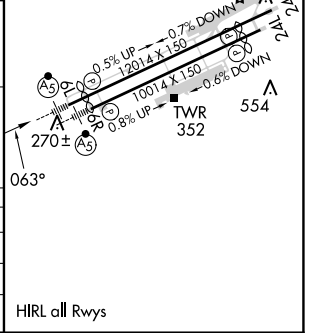
GUAM INTL (GUM)(PGUM)

RNP AR APCH - GPS.		MALSR 	MISSED APPROACH: Climb to 3000 via track 063° to WABOX and hold.
▼ For uncompensated Baro-VNAV systems, procedure NA below 19°C or above 48°C. For inop ALS, increase RNP *0.30 all Cats visibility to ¾ SM and RNP 0.30 all Cats visibility to 1½ SM. *Missed approach requires a minimum climb of 276 feet per NM to 1400.			

ATIS 119.0	GUAM CERAP 119.8 269.0	AGANA TOWER 118.1 340.2	GND CON 121.9 336.4	CLNC DEL 121.9
----------------------	----------------------------------	-----------------------------------	-------------------------------	--------------------------



Procedure Turn NA	OBAL	VGSI and RNAV glidepath not coincident (VGSI Angle 3.00/TCH 73)	3000	WABOX
GP 3.00° TCH 50	3000		2000	
			2000	
CATEGORY	A	B	C	D
RNP 0.30* DA		514-½	258 (300-½)	
RNP 0.30 DA		656-⅝	400 (400-⅝)	



AUTHORIZATION REQUIRED

HIRL all Rwys

PAC, 20 FEB 2025 to 17 APR 2025

PAC, 20 FEB 2025 to 17 APR 2025