

APP CRS	Rwy Idg	10014
063°	TDZE	258
	Apt Elev	305

RNAV (RNP) Z RWY 6R

GUAM INTL (GUM)(PGUM)

RNP AR APCH - GPS.

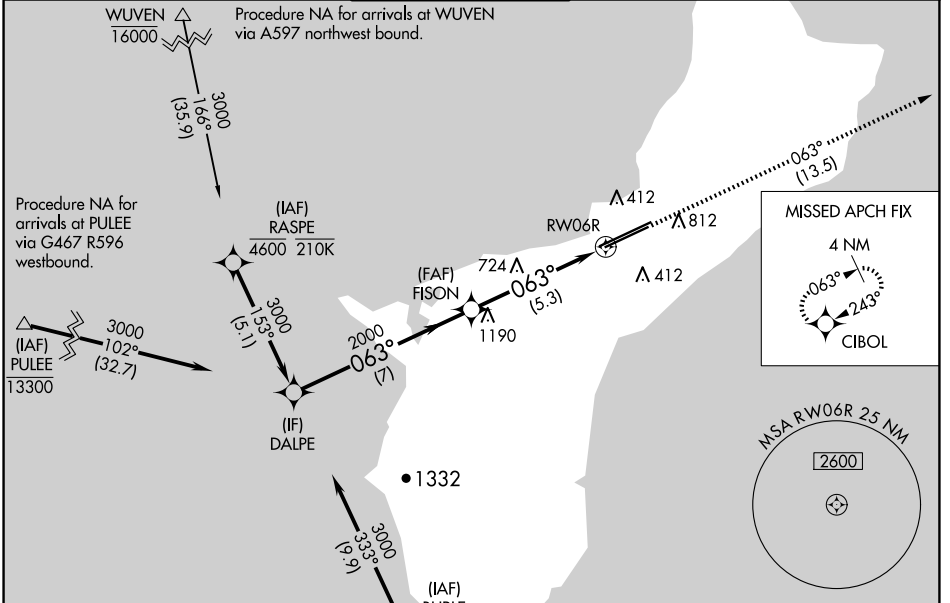
▼ For uncompensated Baro-VNAV systems, procedure NA below 19°C or above 48°C. For inop ALS, increase RNP 0.30 all Cats visibility to 1½ SM. Inop table does not apply to RNP 0.30.*
 *Missed approach requires a minimum climb of 285 feet per NM to 1400.

MALSR



MISSED APPROACH: Climb to 3000 via track 063° to CIBOL and hold.

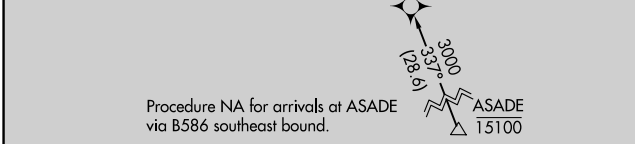
ATIS	GUAM CERAP	AGANA TOWER	GND CON	CLNC DEL
119.0	119.8 269.0	118.1 340.2	121.9 336.4	121.9



PAC, 20 FEB 2025 to 17 APR 2025

PAC, 20 FEB 2025 to 17 APR 2025

ELEV 305	D TDZE 258
----------	-------------------



341±

0.5% UP, 0.7% DOWN, 0.8% UP, 0.6% DOWN

12014 X 150

10014 X 150

270±, 352, 554

063°

HIRL all Rwys

Procedure Turn NA	DALPE	VGSi and RNAV glidepath not coincident (VGSi Angle 3.00/TCH 76).		3000	CIBOL
		FISON		2000	
	3000			2000	
	7 NM		5.3 NM		
CATEGORY	A	B	C	D	
RNP 0.30* DA		511-¾	253 (300-¾)		
RNP 0.30 DA		656-¾	398 (400-¾)		
AUTHORIZATION REQUIRED					