

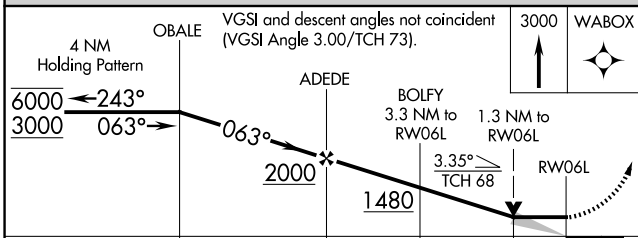
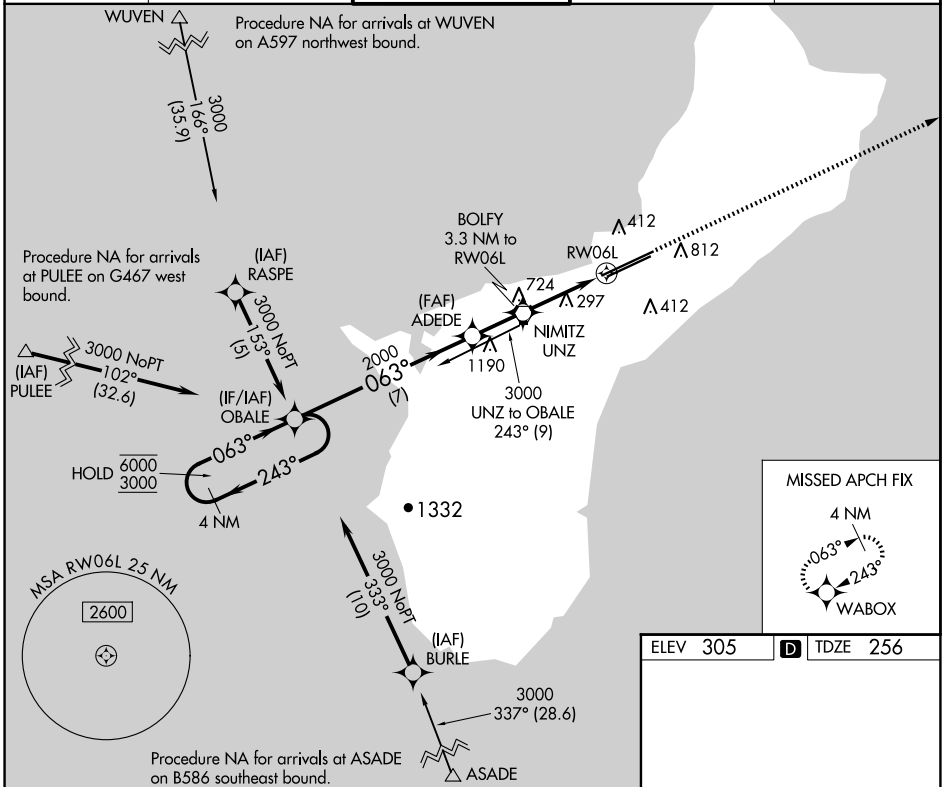
APP CRS	Rwy Idg	<b>11014</b>
<b>063°</b>	TDZE	<b>256</b>
	Apt Elev	<b>305</b>

# RNAV (GPS) Y RWY 6L

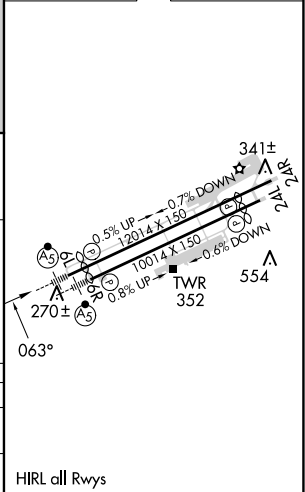
GUAM INTL (GUM)(PGUM)

RNP APCH - GPS.	MALSRL	MISSED APPROACH: Climb to 3000 direct WABOX and hold.
▼ Circling NA southeast of Rwy 6R-24L. For inop ALS, increase Cat C and D visibility to 1 3/8 SM.		

ATIS <b>119.0</b>	GUAM CERAP <b>119.8 269.0</b>	AGANA TOWER <b>118.1 340.2</b>	GND CON <b>121.9 336.4</b>	CLNC DEL <b>121.9</b>
----------------------	----------------------------------	-----------------------------------	-------------------------------	--------------------------



ELEV 305	<b>D</b> TDZE 256
----------	-------------------



CATEGORY	A	B	C	D
LNAV MDA	720-1/2	464 (500-1/2)	720-1	464 (500-1)
<b>C</b> CIRCLING	880-1	575 (600-1)	940-1 3/4 635 (700-1 3/4)	NA

HIRL all Rwys

PAC, 20 FEB 2025 to 17 APR 2025

PAC, 20 FEB 2025 to 17 APR 2025