

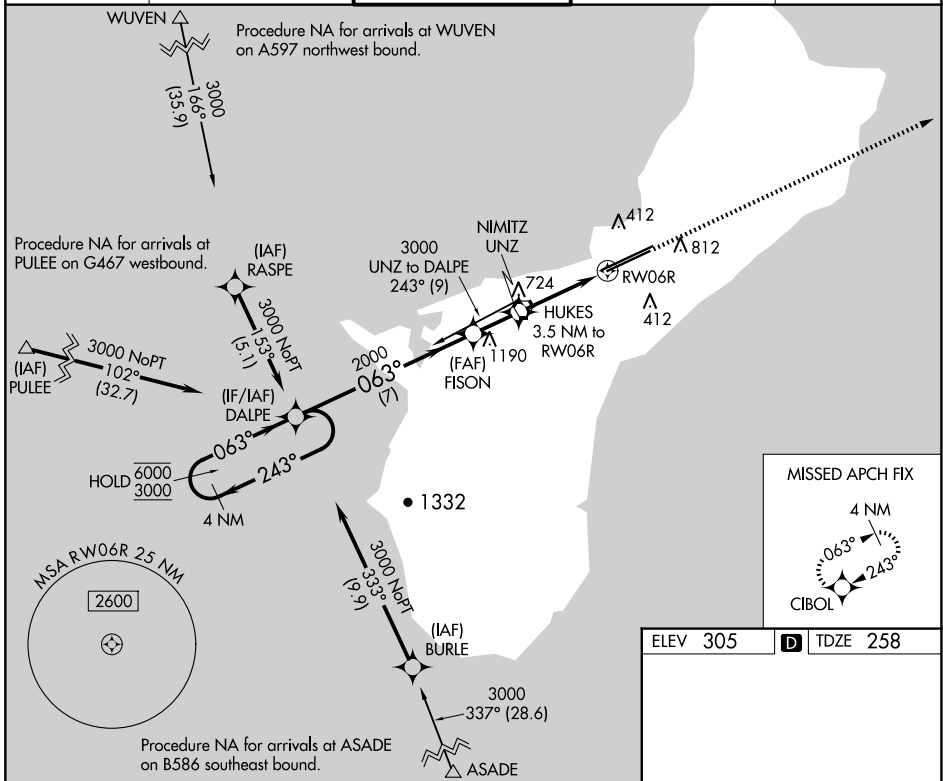
APP CRS	Rwy Idg	10014
063°	TDZE	258
	Apt Elev	305

RNAV (GPS) Y RWY 6R

GUAM INTL (GUM)(PGUM)

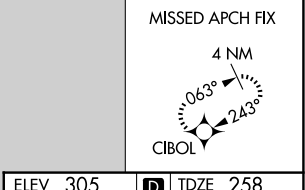
RNP APCH - GPS.		MALSR	MISSED APPROACH: Climb to 3000 direct CIBOL and hold.	
<p>▼ Rwy 6R helicopter visibility reduction below 3/4 SM NA. For inop ALS, increase Cat A and B visibility to 1 SM, and Cat C and D to 2 SM. Circling NA southeast of Rwy 6R-24L.</p>				

ATIS	GUAM CERAP	AGANA TOWER	GND CON	CLNC DEL
119.0	119.8 269.0	118.1 340.2	121.9 336.4	121.9

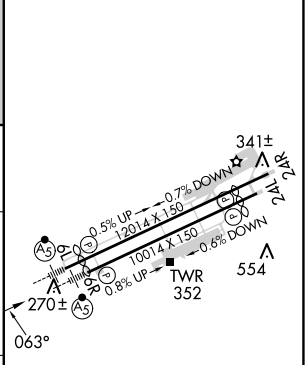
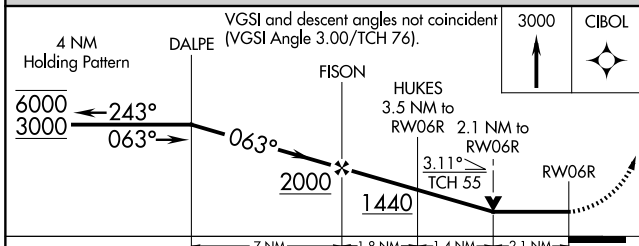


PAC, 20 FEB 2025 to 17 APR 2025

PAC, 20 FEB 2025 to 17 APR 2025



ELEV 305	D TDZE 258
----------	-------------------



CATEGORY	A	B	C	D
LNVA MDA	980-3/4	722 (700-3/4)	980-1 5/8	722 (700-1 5/8)
C CIRCLING	980-1	675 (700-1)	980-2 675 (700-2)	NA

HIRL all Rwys