

TONOPAH, NEVADA

ILS or LOC/DME RWY 14

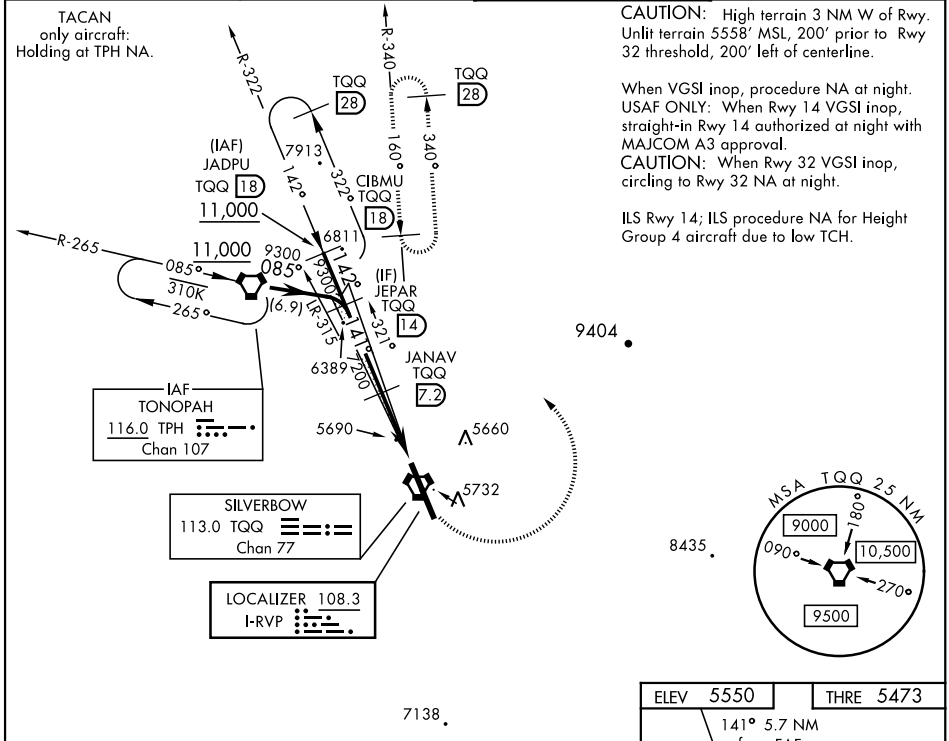
LOC I-RVP 108.3	APCH CRS 141°	Rwy Idg 12,001 THRE 5473 Arprt Elev 5550	AL-3188 [USAF]	TONOPAH TEST RANGE (KTNX)
---------------------------	-------------------------	--	----------------	---------------------------

▼ *When ALS inop, increase vis to ¼ mile.
 **When ALS inop, increase CAT AB vis to 1 mile, CAT CDE to 1½ miles.
 ***Circling not authorized W of Rwy 14-32.

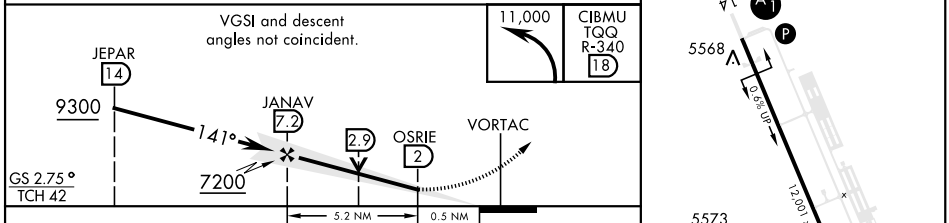
 ALSF-1

 MISSED APPROACH: Turn left climbing to 11,000 via TQQ R-340 to CIBMU and hold, continue climb-in-hold to 11,000.

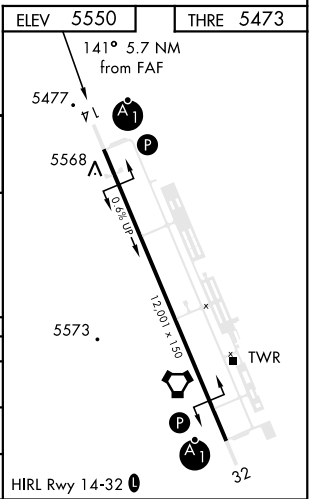
AWOS 113.0	NELLIS CONTROL 119.35 254.4	SILVERBOW TOWER* 124.75 257.95	GND CON 127.25 335.5
----------------------	---------------------------------------	--	--------------------------------



EMERG SAFE ALT 100 NM 16,600



CATEGORY	A	B	C	D	E
S-ILS 14*	5673 - ½		200	(200-½)	
S-LOC 14**	5960-½ 487 (500-½)		5960-1	487	(500-1)
CIRCLING***	6040-1 490 (500-1)		6040-1½ 490 (500-1½)	6100-2 550 (600-2)	



TONOPAH, NEVADA 37°47'N - 116°47'W TONOPAH TEST RANGE (KTNX)

Amtd 3 09JAN14

ILS or LOC/DME RWY 14

SW-4, 20 MAR 2025 to 17 APR 2025

SW-4, 20 MAR 2025 to 17 APR 2025