

# LEAHI ONE (RNAV) DEPARTURE (LEAHI · LEAHI)

TONOPAH TEST RANGE (KTNX)

TONOPAH, NEVADA

AWOS 113.0  
 GND CON 127.25 335.5  
 SILVERBOW TOWER ★  
 124.75 257.95  
 NELLIS CONTROL  
 119.35 254.4

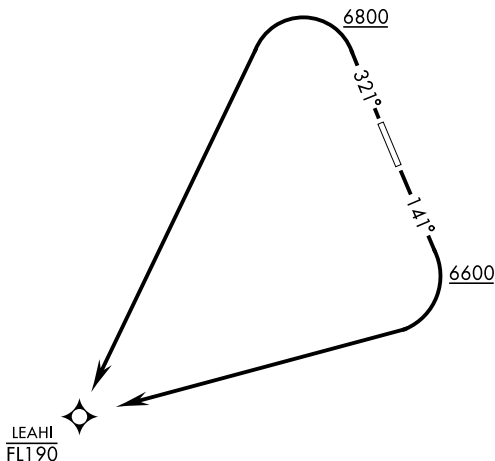
[USAF] AL-3188

Rwy	Knots	60	120	180	240	300	360
14 (a)	V/V(fpm)	387	774	1161	1548	1935	2322
32 (b)	V/V(fpm)	336	672	1008	1344	1680	2016

Minimum Climb Rate

(a) to 8200

(b) to 8300



SW-4, 20 MAR 2025 to 17 APR 2025

SW-4, 20 MAR 2025 to 17 APR 2025

RNAV1

## GPS REQUIRED



### DEPARTURE ROUTE DESCRIPTION

TAKEOFF RWY 14: Climb on heading 141° to 6600, then right turn direct to cross LEAHI at or below FL190 or as assigned by ATC.

TAKEOFF RWY 32: Climb on heading 321° to 6800, then left turn direct to cross LEAHI at or below FL190 or as assigned by ATC.

# LEAHI ONE (RNAV) DEPARTURE (LEAHI · LEAHI)

Orig 24MAR22

TONOPAH, NEVADA  
TONOPAH TEST RANGE (KTNX)