

# VOR/DME Z RWY 32

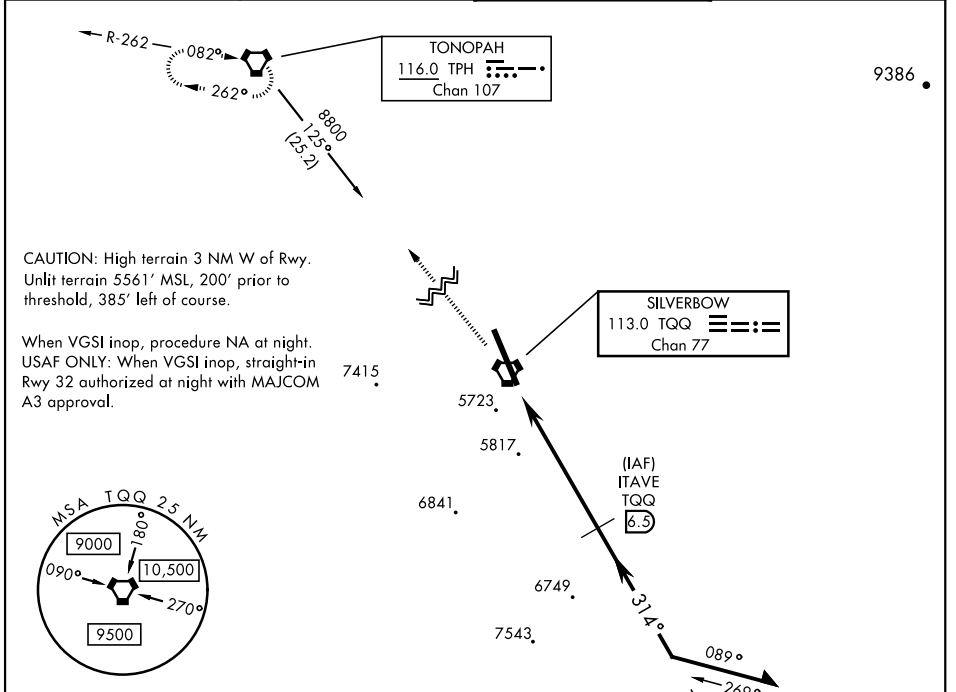
VORTAC TQQ <b>113.0</b> Chan <b>77</b>	APCH CRS <b>314°</b>	Rwy Idg THRE: <b>12,001</b> 5550 Arpt Elev <b>5550</b>
--	-------------------------	---

AL-3188 [USAF]

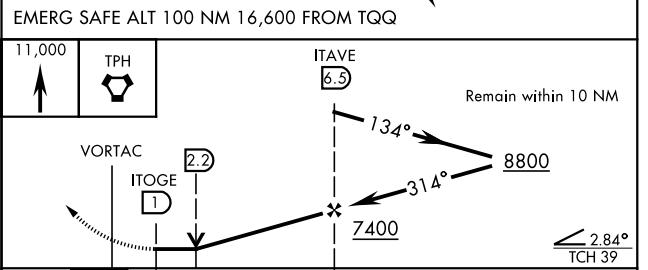
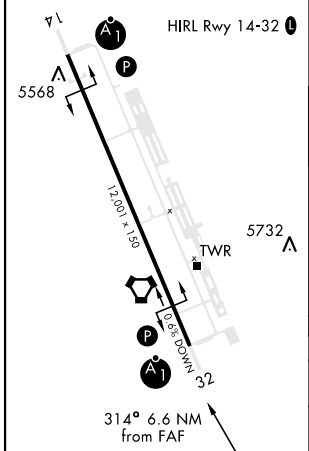
TONOPAH TEST RANGE (KTNX)

<p><b>V</b> *Circling not authorized W of Rwy 14-32.</p>	<p>ALSIF-1</p>	<p>MISSED APPROACH: Climb to 11,000 direct to TPH VORTAC and hold. Continue climb in holding to 11,000.</p>
--	----------------	---

<p>AWOS <b>113.0</b></p>	<p>NELLIS CONTROL <b>119.35 254.4</b></p>	<p>SILVERBOW TOWER * <b>124.75 257.95</b> 0</p>	<p>GND CON <b>127.25 335.5</b></p>
------------------------------	---	---	--



ELEV 5550	THRE 5550
-----------	-----------



CATEGORY	A	B	C	D	E
S-32	6080/24 530 (600-1/2)		6080/55 530 (600-1)	NOT AUTHORIZED	
<b>C</b> CIRCLING*	6080-1 530 (600-1)		6080-1 1/2 530 (600-1 1/2)	NOT AUTHORIZED	

# VOR/DME Z RWY 32

SW-4, 20 MAR 2025 to 17 APR 2025

SW-4, 20 MAR 2025 to 17 APR 2025