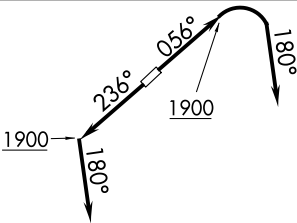


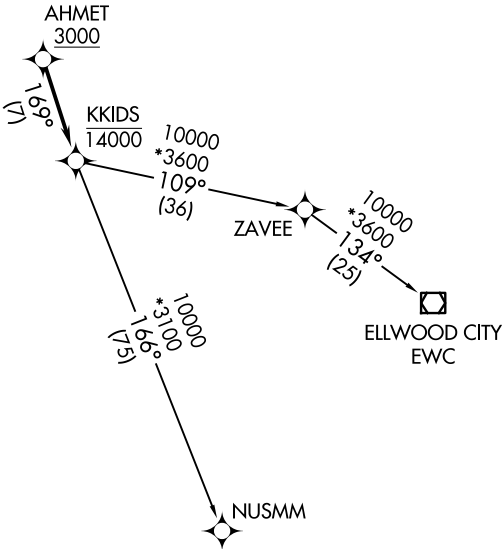
D-ATIS  
119.95  
CLNC DEL  
121.85 (when tower closed)  
GND CON  
121.85  
COUNTY TOWER \*  
118.5 (CTAF)  
CLEVELAND DEP CON  
125.35 346.325

TOP ALTITUDE:  
ASSIGNED BY ATC



TAKEOFF MINIMUMS:  
Rwys 6, 24: Standard  
with minimum climb of  
500' per NM to 1400.

NOTE: RNAV 1.  
NOTE: RADAR required.  
NOTE: DME/DME/IRU or GPS required.



NOTE: Chart not to scale.



DEPARTURE ROUTE DESCRIPTION

TAKEOFF RUNWAY 6: Climb on heading 056° to 1900, then right turn on heading 180° or as assigned by ATC for RADAR vectors to cross AHMET at or above 3000, thence....  
TAKEOFF RUNWAY 24: Climb on heading 236° to 1900, then on heading 180° or as assigned by ATC for RADAR vectors to cross AHMET at or above 3000, thence....

....on track 169° to cross KKIDS at or below 14000, then on (transition).  
Maintain altitude assigned by ATC, expect filed altitude ten minutes after departure.

ELLWOOD CITY TRANSITION (AHMET4.EWC)  
NUSMM TRANSITION (AHMET4.NUSMM)