

WAAS CH 69223 W05A	APP CRS 054°	Rwy Idg TDZE Apt Elev	3318 1224 1224
--	------------------------	-----------------------------	---

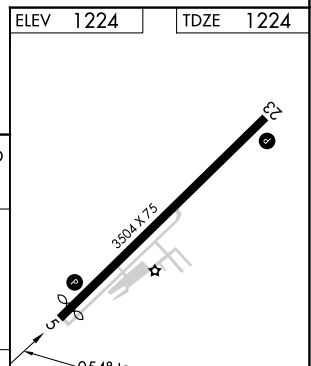
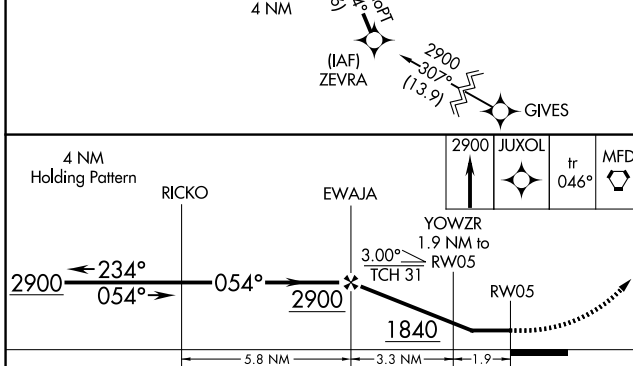
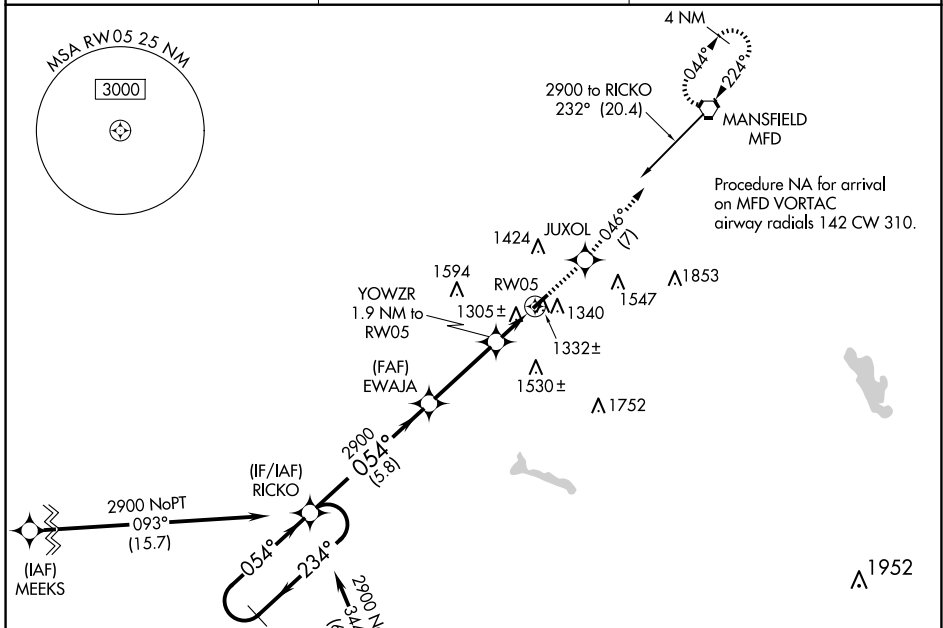
RNAV (GPS) RWY 5

GALLION MUNI (GQQ)

NA Helicopter visibility reduction below 1 SM NA.
DME/DME RNP-0.3 NA. Use Mansfield altimeter setting.
Straight-in Rwy 5 NA at night, Circling Rwy 5 NA at night.

MISSED APPROACH: Climb to 2900 direct JUXOL and on track 046° to MFD VORTAC and hold.

CLEVELAND APP CON ★ 128.35 360.65	CLNC DEL 126.8	UNICOM 122.8 (CTAF) 1
---	--------------------------	---------------------------------



CATEGORY	A	B	C	D
LP MDA	1600-1 376 (400-1)			NA
LNVA MDA	1620-1	396 (400-1)	1620-1½ 396 (400-1½)	NA
CIRCLING	1800-1 576 (600-1)	1960-1 736 (800-1)	1960-2 736 (800-2)	NA

MIRL Rwy 5-23 1
REIL Rws 5 and 23 1

EC-2, 20 MAR 2025 to 17 APR 2025

EC-2, 20 MAR 2025 to 17 APR 2025