

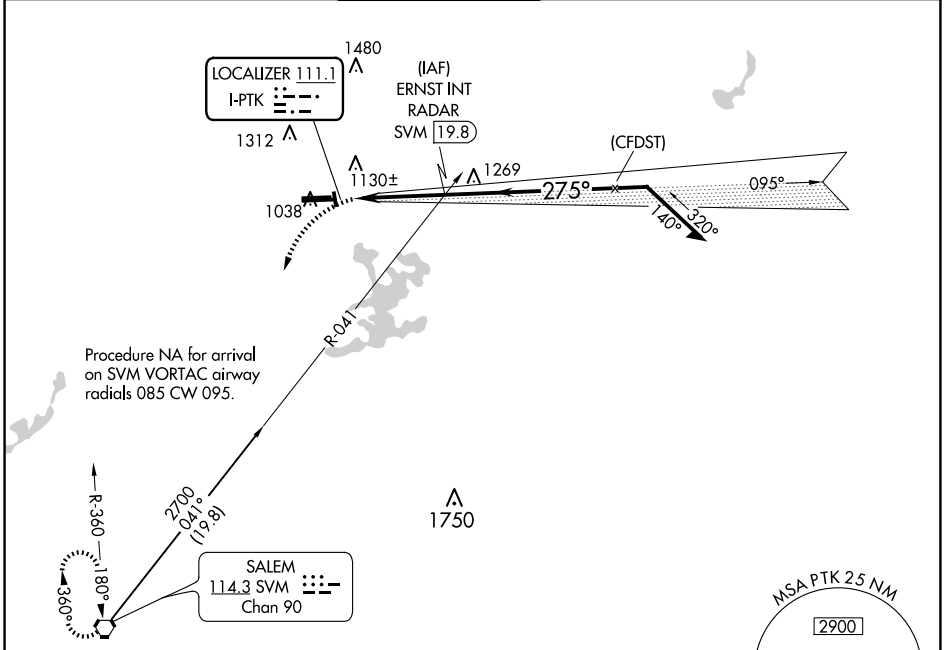
LOC I-PTK <b>111.1</b>	APP CRS <b>275°</b>	Rwy Idg 6520
		TDZE 974
		Apt Elev 981

**LOC BC RWY 27L**  
OAKLAND COUNTY INTL (PTK)

**⚠** Circling Rwy 9L, 36 NA at night. When local altimeter setting not received, use Coleman A Young Muni altimeter setting and increase all MDA 120 feet, increase S-27L Cat C/D visibility  $\frac{3}{8}$  SM and Circling Cat C/D visibility  $\frac{1}{2}$  SM.

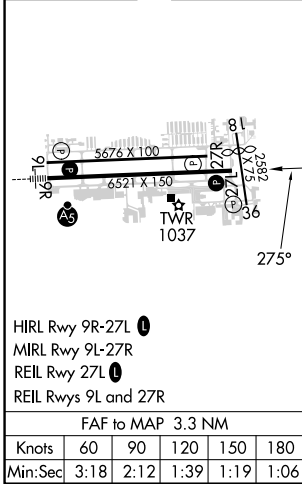
**⚠** MISSED APPROACH: Climbing left turn to 3000 direct SVM VORTAC and hold.

ATIS <b>125.025</b>	DETROIT APP CON <b>132.35 284.0</b>	PONTIAC TOWER * <b>120.5 (CTAF) 0</b>	GND CON <b>121.9</b>	CLNC DEL <b>118.25</b>	UNICOM <b>122.95</b>
------------------------	--	--	-------------------------	---------------------------	-------------------------



ELEV 981	<b>D</b>	TDZE 974
----------	----------	----------

**BACK COURSE**



3000	SVM	ERNST INT RADAR				Remain within 10 NM
I-PTK		095°	275°	2500	2300	Disregard GS indications.
≤ 3.00° TCH 42						
0.7		3.3 NM				
CATEGORY	A	B	C	D		
S-LOC 27L	1440-1	466 (500-1)	1440-1 $\frac{3}{8}$	466 (500-1 $\frac{3}{8}$ )		
<b>C</b> CIRCLING	1500-1 519 (600-1)	1540-1 559 (600-1)	1640-1 $\frac{3}{4}$ 659 (700-1 $\frac{3}{4}$ )	1640-2 659 (700-2)		

EC-1, 20 MAR 2025 to 17 APR 2025

EC-1, 20 MAR 2025 to 17 APR 2025