

EC-1, 20 MAR 2025 to 17 APR 2025

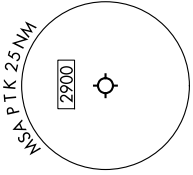
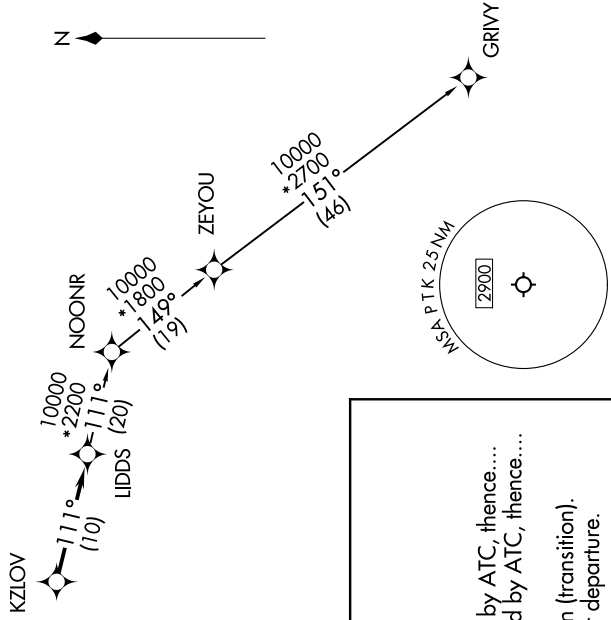
RNAV 1 - DME/DME/IRU or GPS.
RADAR required.

ATIS
125.025
CLNC DEL
118.25
GND CON
121.9
PONTIAC TOWER *
120.5 (CTAF)
DETROIT DEP CON
132.35 284.0



NOTE: Turboprop departures at/above 10000, maintain 280K until advised by ATC.

TAKEOFF MINIMUMS:
Rwys 18, 36: NA-Environmental.
Rwys 9L/R, 27L/R: Standard.



DEPARTURE ROUTE DESCRIPTION

TAKEOFF RUNWAYS 9L/R: Climb on heading 095° or as assigned by ATC, thence....
TAKEOFF RUNWAYS 27L/R: Climb on heading 275° or as assigned by ATC, thence....
...for RADAR vectors to KZLOV, then on track 111°, then on (transition).
Maintain ATC assigned altitude, expect filed altitude 10 minutes after departure.

GRIVY TRANSITION (LIDDS3.GRIVY):

NOTE: Chart not to scale.

EC-1, 20 MAR 2025 to 17 APR 2025