

WAAS CH 58110 W36A	APP CRS 004°	Rwy Idg TDZE Apt Elev	6347 80 90
--	------------------------	-----------------------------	---------------------------------------

RNAV (GPS) RWY 36

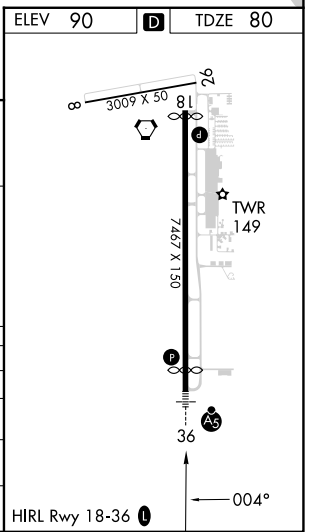
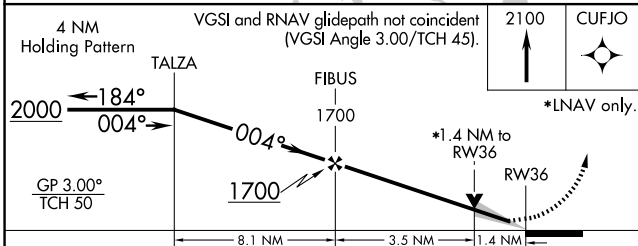
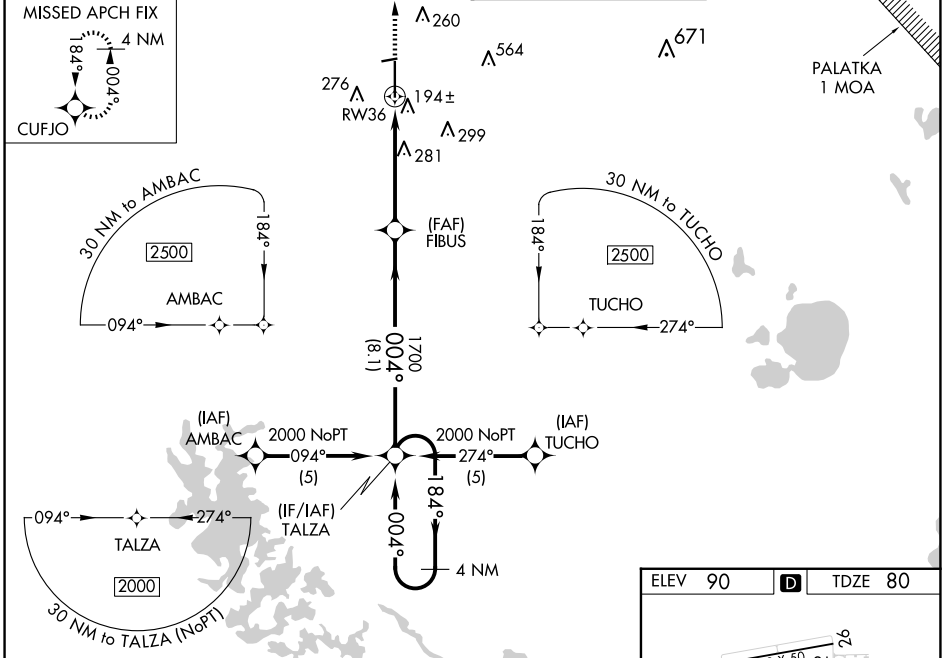
OCALA INTL-JIM TAYLOR FLD (OCF)

⚠ For uncompensated Baro-VNAV systems, LNAV/VNAV NA below -15°C (5°F) or above 48°C (118°F). DME/DME RNP-0.3 NA. When local altimeter setting not received, use Gainesville altimeter setting: Increase LPV DA to 361 feet, increase LNAV/VNAV DA to 644 feet and all MDAs 100 feet; increase LNAV/VNAV all Cats and LNAV visibility Cats C/D ¼ SM, increase Circling visibility Cat C ½ SM and Cat D ¼ SM. VDP and Baro-VNAV NA when using Gainesville altimeter setting. Inop table does not apply to LPV when using local altimeter setting. For inop MALSRS, increase LNAV Cats A and B visibility to 1 mile. For inop MALSRS when using Gainesville altimeter setting, increase LNAV Cats A and B visibility to 1 mile.

MALSRS **A5**

MISSED APPROACH:
Climb to 2100 direct CUFJO and hold.

ATIS 128.125	JACKSONVILLE APP CON 118.6 251.15	OCALA TOWER ★ 119.25 (CTAF) 0	GND CON 121.4
------------------------	---	---	-------------------------



CATEGORY	A	B	C	D
LPV DA	280-¾		200 (200-¾)	
LNAV/VNAV DA	563-1¼		483 (500-1¼)	
LNAV MDA	540-¾		460 (500-¾)	
CIRCLING	600-1		760-1¾	
	510 (600-1)		670 (700-1¾)	
			540-1	
			460 (500-1)	
			920-2¾	
			830 (900-2¾)	

SE-3, 20 MAR 2025 to 17 APR 2025

SE-3, 20 MAR 2025 to 17 APR 2025