

LIMA, OHIO

AL-5143 (FAA)

23110

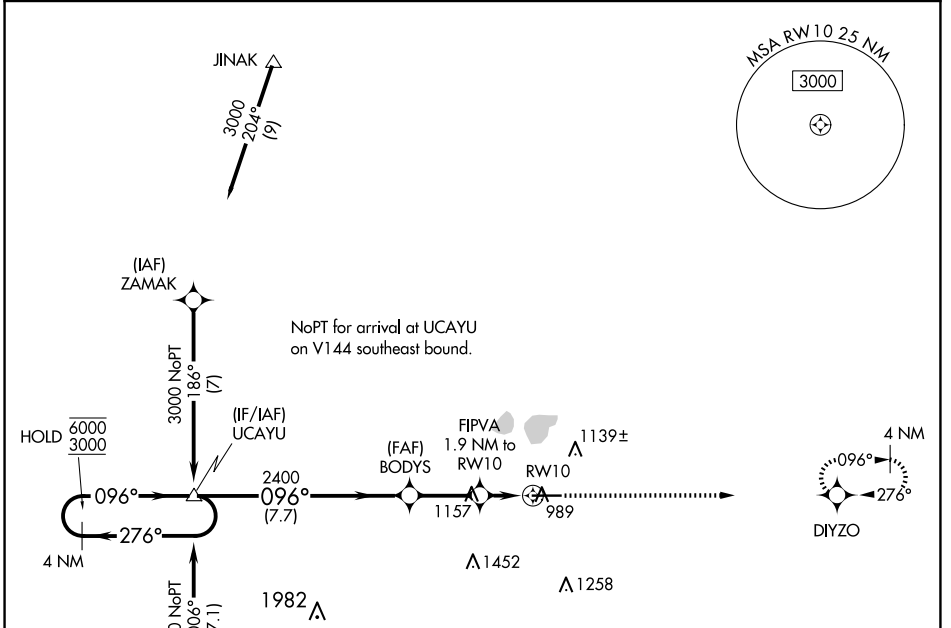
WAAS CH 65816 W10A	APP CRS 096°	Rwy Idg TDZE Apt Elev	6000 961 975
--	------------------------	-----------------------------	---

RNAV (GPS) RWY 10

LIMA ALLEN COUNTY (AOH)

RNP APCH.	Rwy 10 helicopter visibility reduction below 3/4 SM NA. For uncompensated Baro-VNAV systems, LNAV/VNAV NA below -16°C or above 54°C.	MISSED APPROACH: Climb to 3000 direct DIYZO and hold.
-----------	--	---

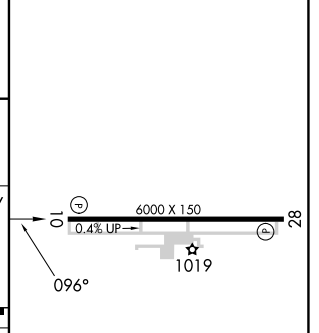
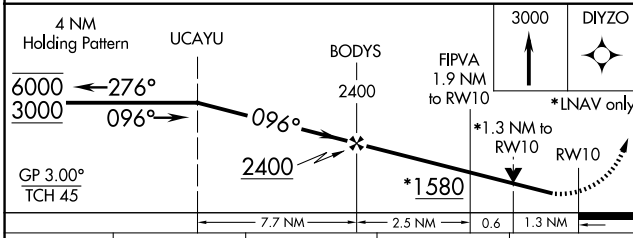
ASOS 128.725	COLUMBUS APP CON 121.825 323.15	UNICOM 122.7 (CTAF) 0
------------------------	---	---------------------------------



EC-2, 20 MAR 2025 to 17 APR 2025

EC-2, 20 MAR 2025 to 17 APR 2025

ELEV 975	TDZE 961
----------	----------



CATEGORY	A	B	C	D
LPV DA		1211-1	250 (300-1)	
LNAV/VNAV DA		1272-1	311 (300-1)	
LNAV MDA	1420-1	459 (500-1)	1420-1 3/8	459 (500-1 3/8)

REIL Rwy 10 and 28 0
HIRL Rwy 10-28 0

LIMA, OHIO
Amdt 1C 30JAN20

40°42'N-84°02'W

LIMA ALLEN COUNTY (AOH) RNAV (GPS) RWY 10