

| | | |
|--|------------------------|---|
| WAAS CH 65840 W32A | APP CRS 318° | Rwy Idg 3034 TDZE 49 Apt Elev 49 |
|--|------------------------|---|

RNAV (GPS) RWY 32

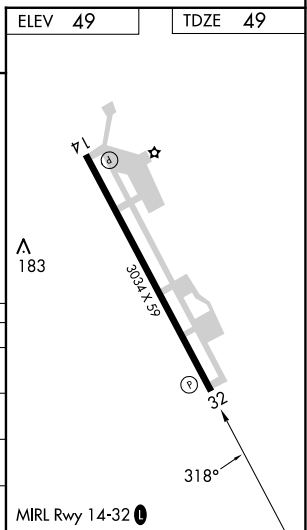
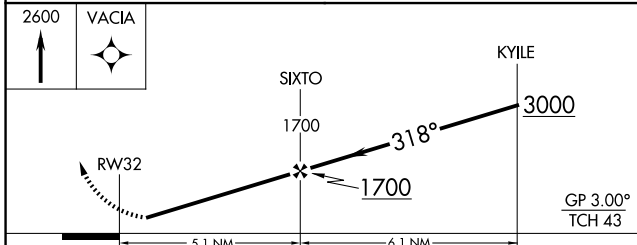
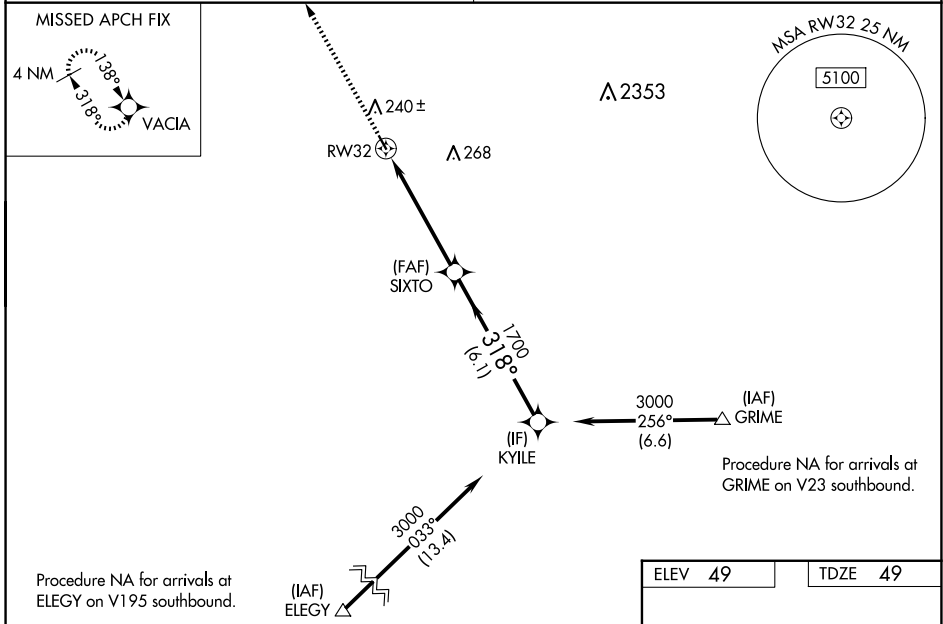
COLUSA COUNTY (008)

RNP APCH - GPS.

NA Baro-VNAV NA when using Sacramento Intl altimeter setting. Rwy 32 helicopter visibility reduction below 1 SM NA. For uncompensated Baro-VNAV systems, LNAV/VNAV NA below -15°C or above 54°C. Procedure NA at night. Obtain local altimeter setting on CTAF; when not received, use Sacramento Intl altimeter setting: increase LPV DA to 381 feet, increase LNAV/VNAV DA to 551 feet and all visibilities ¼ SM; increase all MDAs 100 feet and LNAV Cat C visibility ¼ SM and Circling Cat C visibility ½ SM.

MISSED APPROACH: Climb to 2600 direct VACIA and hold.

| | |
|--------------------------------------|---------------------------------|
| OAKLAND CENTER 132.2 350.3 | UNICOM 122.8 (CTAF) 0 |
|--------------------------------------|---------------------------------|



| CATEGORY | A | B | C | D |
|--------------|--------|--------------|------------------------|----|
| LPV DA | 299-1 | 250 (300-1) | | NA |
| LNAV/VNAV DA | 469-1½ | 420 (500-1½) | | NA |
| LNAV MDA | 520-1 | 471 (500-1) | 520-1¾ 471 (500-1¾) | NA |
| CIRCLING | 600-1 | 551 (600-1) | 620-1½ 571 (600-1½) | NA |

SW-2, 20 MAR 2025 to 17 APR 2025

SW-2, 20 MAR 2025 to 17 APR 2025