

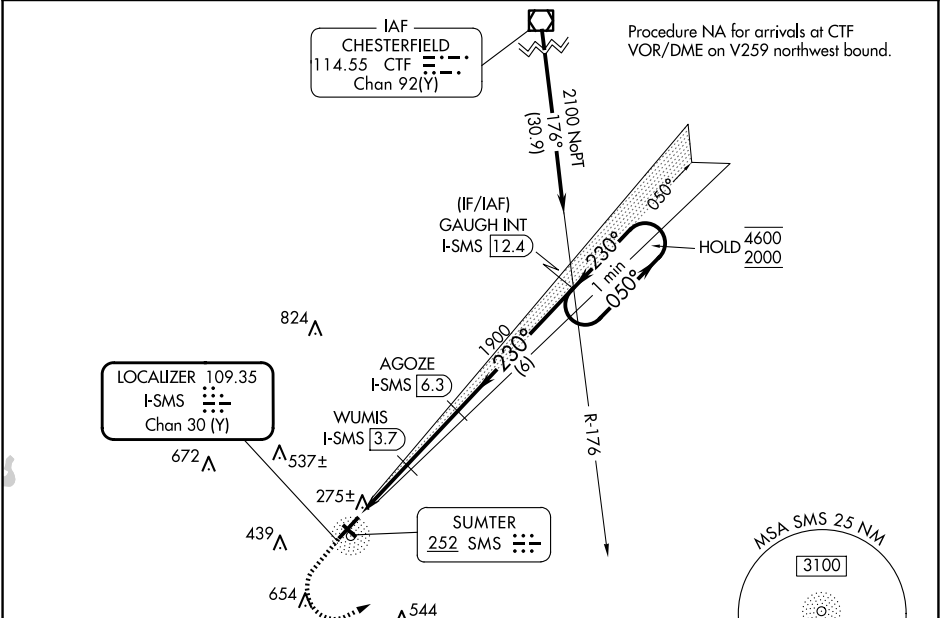
LOC/DME I-SMS 109.35 Chan 30 (Y)	APP CRS 230°	Rwy Idg 5501 TDZE 182 Apt Elev 182
------------------------------------------------------	------------------------	---------------------------------------------------------------

ILS or LOC RWY 23

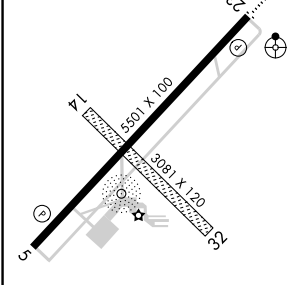
SUMTER (SMS)

DME required.	ODALS	MISSED APPROACH: Climb to 600 then climbing left turn to 2000 on heading 050° and CTF VOR/DME R-176 to GAUGH INT/I-SMS 12.4 DME and hold.
⚠ Circling NA to Rwy 14 and 32. Inop table does not apply to S-ILS 23 all Cats.		

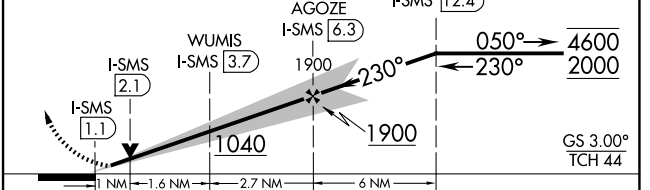
AWOS-3 118.075	SHAW APP CON ★ 125.4	UNICOM 122.7 (CTAF) Ⓛ
--------------------------	--------------------------------	----------------------------------------



ELEV 182	TDZE 182
----------	----------



CTF R-176	GAUGH INT	One Minute Holding Pattern
-----------	-----------	----------------------------



CATEGORY	A	B	C	D
S-ILS 23		382- ³ / ₄	200 (200- ³ / ₄)	
S-LOC 23	540- ³ / ₄	358 (400- ³ / ₄)	540- ⁷ / ₈	358 (400- ⁷ / ₈)
C CIRCLING	600-1 418 (500-1)	680-1 498 (500-1)	960-2 ¹ / ₄ 778 (800-2 ¹ / ₄)	960-2 ¹ / ₂ 778 (800-2 ¹ / ₂)

SE-2, 20 MAR 2025 to 17 APR 2025

SE-2, 20 MAR 2025 to 17 APR 2025