

(RST1.RST) 23334

ROCHESTER ONE DEPARTURE

ANOKA COUNTY/BLAINE (JANES FLD) (A.N.E.)

AL-5202 (FAA)

MINNEAPOLIS, MINNESOTA

MINNEAPOLIS DEP CON

126.5 335.65

ATIS

120.625

CLNC DEL

121.3

CLNC DEL

121.85 (when twr closed)

ANOKA TOWER*

132.4



TOP ALTITUDE:
(JETS) 7000/
(PROPS) 5000

TAKEOFF MINIMUMS

Rwy 9: Standard with minimum climb of 341' per NM to 3000.

Rwy 18: Standard with minimum climb of 371' per NM to 3000.

Rwy 27: Standard with minimum climb of 260' per NM to 2800.

Rwy 36: Standard with minimum climb of 259' per NM to 2800.

FLYING CLOUD
117.7 FCM
Chan 124

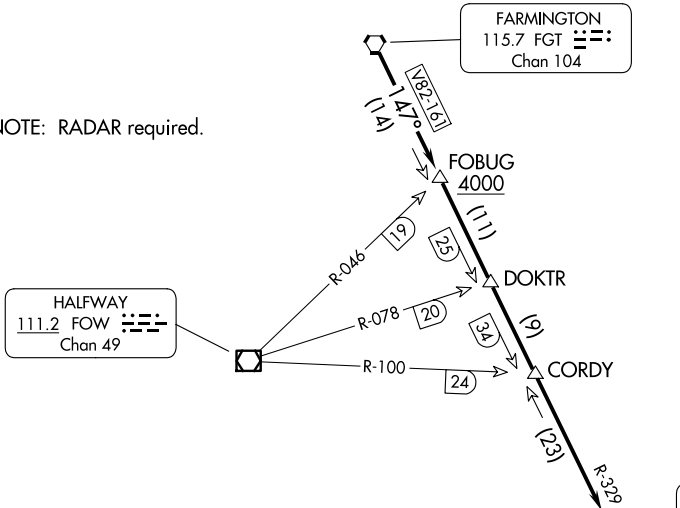
FARMINGTON
115.7 FGT
Chan 104

HALFWAY
111.2 FOW
Chan 49

ROCHESTER
112.0 RST
Chan 57

WATERLOO
112.2 ALO
Chan 59

NOTE: RADAR required.



DEPARTURE ROUTE DESCRIPTION

TAKEOFF ALL RUNWAYS: Fly assigned heading and altitude for RADAR vectors to FGT VORTAC then on FGT R-147 and RST R-329 to RST VOR/DME. Cross FOBUG INT/FGT 14 DME at or above 4000, thence

. . . .on assigned transition or assigned route. Expect clearance to filed altitude/flight level 10 (ten) minutes after departure.

WATERLOO TRANSITION (RST1.ALO): From over RST VOR/DME on RST R-168 and ALO R-353 to ALO VOR/DME.

NOTE: Chart not to scale.

ROCHESTER ONE DEPARTURE

(RST1.RST) 13SEP18

MINNEAPOLIS, MINNESOTA

ANOKA COUNTY/BLAINE (JANES FLD) (A.N.E.)

NC-1, 20 MAR 2025 to 17 APR 2025

NC-1, 20 MAR 2025 to 17 APR 2025