

# RNAV (GPS) RWY 14

|          |            |      |
|----------|------------|------|
| APCH CRS | Rwy Idg    | 3025 |
| 139°     | TDZE       | 12   |
|          | Arprt Elev | 12   |

[USA]

FELKER AAF (KFAP)

RNP APCH - GPS

ODALS

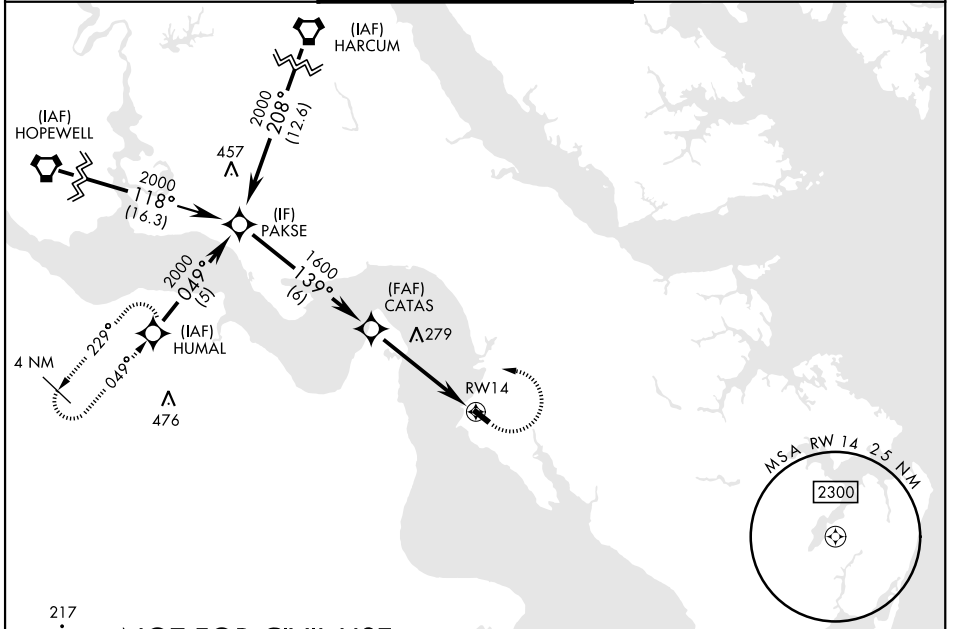
MISSED APPROACH: Climbing left turn to 2000 direct HUMAL and hold.

Procedure NA at night.  
When local altimeter setting not received, use Newport News/Williamsburg Intl altimeter setting. Rwy 14 helicopter visibility reduction below 1 SM NA.

NORFOLK APP CON  
**125.7 335.625**

TOWER ★  
**126.3 (CTAF) 0 269.25**

GND CON  
**121.35 229.4**



NE-3, 20 MAR 2025 to 17 APR 2025

NE-3, 20 MAR 2025 to 17 APR 2025

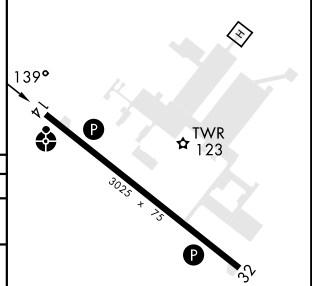
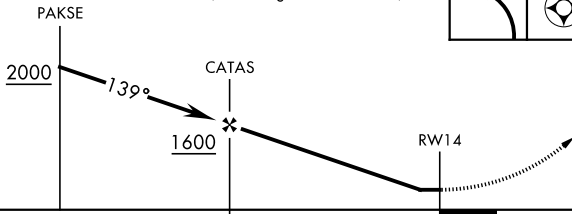
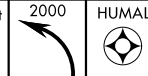
217

NOT FOR CIVIL USE

ELEV 12

TDZE 12

VGSI and Descent Angle not coincident (VGSI Angle 3.00/TCH 48)



| CATEGORY                                  | A                    | B                    | C | D  |
|---|----------------------|----------------------|---|----|
| RNAV MDA                                  | 480-1                | 468 (500-1)          |   | NA |
| CIRCLING                                  | 480-1<br>468 (500-1) | 560-1<br>548 (600-1) |   | NA |
| NEWPORT NEWS /WILLIAMSBURG INTL ALTIMETER |                      |                      |   |    |
| RNAV MDA                                  | 500-1                | 488 (500-1)          |   | NA |
| CIRCLING                                  | 500-1<br>488 (500-1) | 580-1<br>568 (600-1) |   | NA |

HIRL Rwy 14-32 0

# RNAV (GPS) RWY 14