

LOC/DME I-SOP 111.5 Chan 52	APP CRS 054°	Rwy Idg TDZE Apt Elev	5502 455 459
---	------------------------	-----------------------------	---

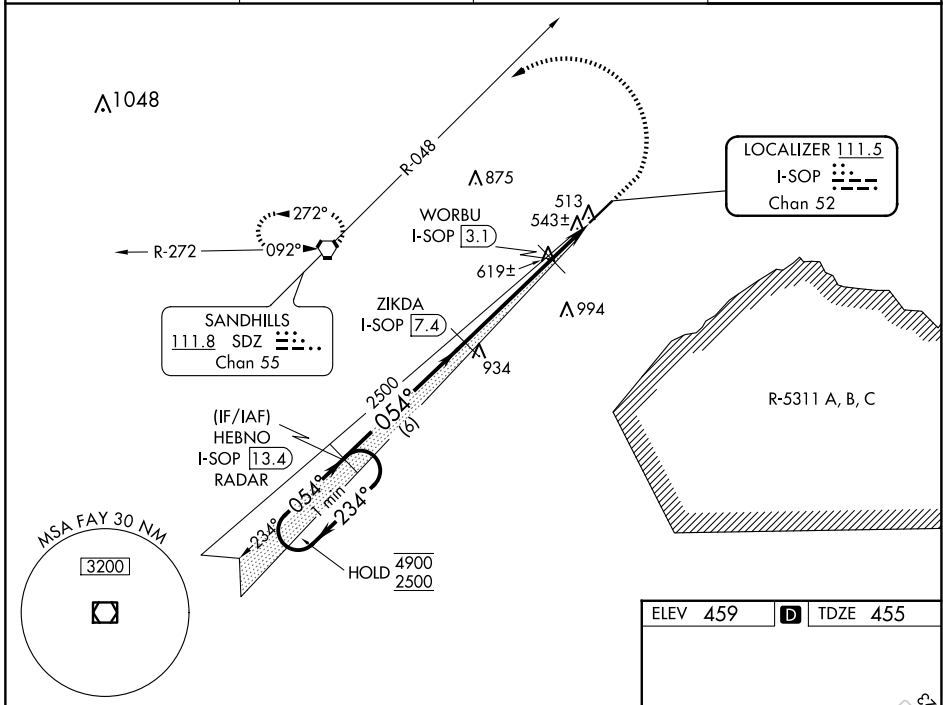
ILS Z or LOC Z RWY 5

MOORE COUNTY(SOP)

DME required.
RADAR required for procedure entry.

MALSR
MISSED APPROACH: Climb to 1400 then climbing left turn to 3300 on heading 300° and on SDZ VORTAC R-048 to SDZ VORTAC and hold.

AWOS-3PT 127.575	FAYETTEVILLE APP CON 127.8 343.725	CLNC DEL 127.0	UNICOM 123.05 (CTAF) 0
----------------------------	--	--------------------------	---



SE-2, 20 MAR 2025 to 17 APR 2025

SE-2, 20 MAR 2025 to 17 APR 2025

One Minute Holding Pattern	HEBNO I-SOP (13.4) RADAR	ZIKDA I-SOP (7.4)	WORBU I-SOP (3.1)	* I-SOP (2.1)	I-SOP (1.1)
4900 2500	2500	2500	1400	3300	SDZ R-048
GS 3.00° TCH 39	234°	054°	hdg 300°		
	6 NM	4.3 NM	1 NM	1 NM	
CATEGORY	A	B	C	D	
S-ILS 5	655-1/2		200 (200-1/2)		
S-LOC 5	800-1/2	345 (400-1/2)	800-5/8	345 (400-5/8)	
CIRCLING	880-1 421 (500-1)	920-1 461 (500-1)	1100-1 1/4 641 (700-1 1/4)	1360-3 901 (1000-3)	

