

PTOMC TWO DEPARTURE (RNAV)

NE-3, 20 MAR 2025 to 17 APR 2025

DEPARTURE ROUTE DESCRIPTION

TAKEOFF RUNWAY 17: Climb heading 171° to 900, then climbing right turn direct to cross PTOMC at 3000, do not exceed 210K until PTOMC, thence . . .

TAKEOFF RUNWAY 35: Climb heading 351° to 900, then climbing left turn direct to cross PTOMC at 3000, do not exceed 210K until PTOMC, thence . . .

. . . on heading 310°, maintain 3000, expect radar vectors on course. Expect filed altitude within ten (10) minutes after departure.

WESTMINSTER
EMI

NOTE: DME/DME/IRU or GPS required.
NOTE: RNAV 1.
NOTE: RADAR required.

BALTIMORE
BAL

SWANN
SWANN

BROSS
BROSS

PALEO
PALEO

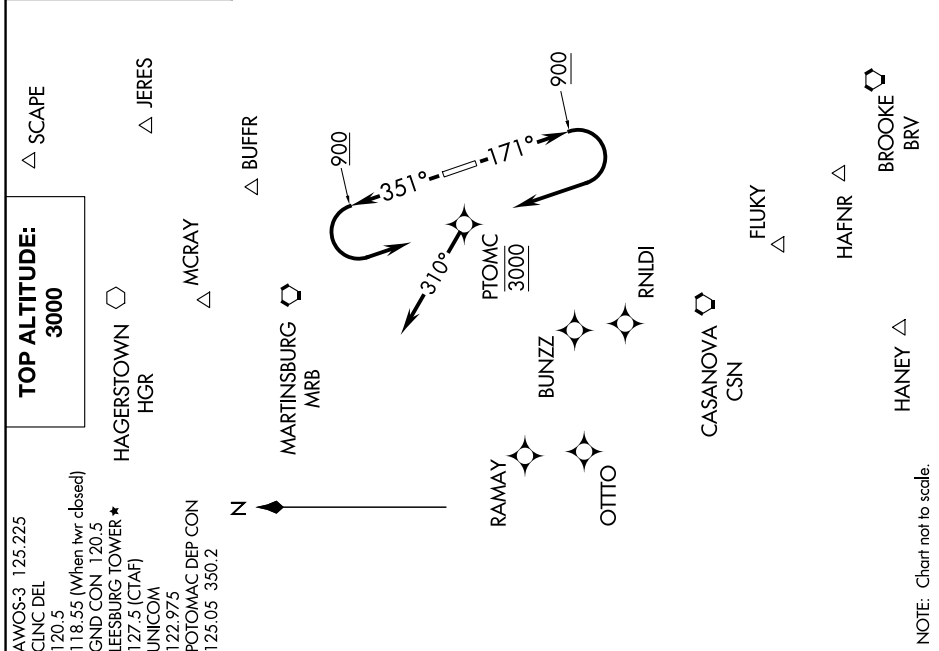
AGARD
AGARD

WOOLY
WOOLY

TAKEOFF MINIMUMS:

Rwy 17: Standard with minimum climb of 500' per NM to 900. Then 327' per NM to 3000.

Rwy 35: Standard with minimum climb of 500' per NM to 900. Then 370' per NM to 3000.



TOP ALTITUDE:
3000

SCAPE
SCAPE

AWOS-3 125.225
CLNC DEL
120.5
118.55 (When hwr closed)
GND CON 120.5
LEESBURG TOWER *
127.5 (CTAF)
UNICOM
122.975
POTOMAC DEP CON
125.05 350.2

PTOMC TWO DEPARTURE (RNAV)

NE-3, 20 MAR 2025 to 17 APR 2025