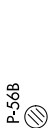


# SCRAM SIX DEPARTURE (RNAV)

**TOP ALTITUDE:**  
3000



NOTE: Chart not to scale.

## DEPARTURE ROUTE DESCRIPTION

Climb on heading assigned by ATC, expect RADAR vectors to POOCH, then on track 240° to SCRAM, thence. . . .

. . . . as depicted. Maintain 3000, expect clearance to filed altitude within ten (10) minutes after departure.

GLANC TRANSITION (SCRAM6.GLANC):

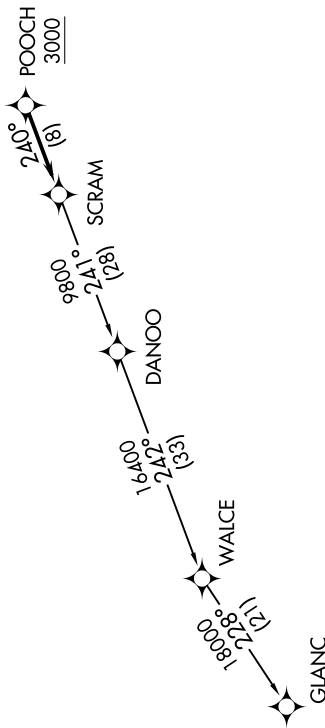
NE-3, 20 MAR 2025 to 17 APR 2025

AWOS-3  
125.225  
CLNC DEL  
120.5  
118.55 (When twr closed)  
GND CON  
120.5  
LEESBURG TOWER ★  
127.5 (CTAF)  
UNICOM  
122.975  
POTOMAC DEP CON  
125.05 350.2

NOTE: RNAV 1.  
NOTE: RADAR required.  
NOTE: DME/DME/IRU or GPS required.  
NOTE: Turbo-jets only.

NOTE: Takeoff Rwy 35 requires a climb to 1200 on heading 353° before proceeding on the ATC assigned heading for obstacle avoidance.

TAKEOFF MINIMUMS:  
Rwys 17, 35: Standard



# SCRAM SIX DEPARTURE (RNAV) (SCRAM6.SCRAM) 31DEC20

NE-3, 20 MAR 2025 to 17 APR 2025