

# LAMPS EIGHT DEPARTURE

AWOS-3PT  
128.575  
CLNC DEL  
121.7  
CTAF  
122.7  
GRAY DEP CON  
120.075 323.15

RADAR required.

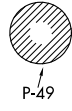
**TOP ALTITUDE:  
ASSIGNED BY ATC**

TAKEOFF MINIMUMS  
Rwys 1, 19: Standard.

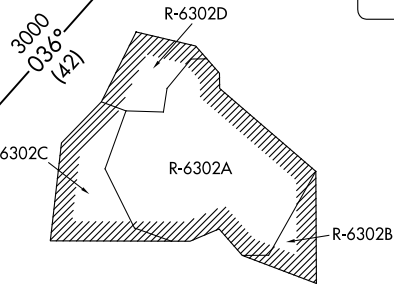
SONET

2700  
\*2200  
091°  
(17)

R-271



WACO  
115.3 ACT  
Chan 100



GOOCH SPRINGS  
112.5 AGJ  
Chan 72

R-098

278°

3800  
\*3200  
202°  
(6.5)

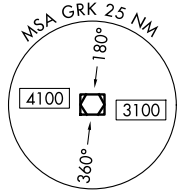
R-018

STONEWALL  
113.8 STV  
Chan 85

330°

300°

GRAY  
111.8 GRK  
Chan 55



NOTE: WACO TRANSITION for aircraft inbound to terminal area airports.

NOTE: Chart not to scale.

## DEPARTURE ROUTE DESCRIPTION

TAKEOFF RUNWAY 1: Climbing right turn heading 300° (to assigned altitude) to intercept and proceed on AGJ R-098. Thence. . .

TAKEOFF RUNWAY 19: Climbing right turn heading 330° (to assigned altitude) to intercept and proceed on AGJ R-098. Thence. . .

. . . on (transition) or (assigned route). Maintain ATC assigned altitude.

STONEWALL TRANSITION (LAMPS8.STV): From over AGJ VORTAC on AGJ R-202 and STV R-018 to STV VORTAC.

WACO TRANSITION (LAMPS8.ACT): From over AGJ VORTAC on AGJ R-036 to SONET INT, then on ACT R-271 to ACT VORTAC.

# LAMPS EIGHT DEPARTURE

(LAMPS8.AGJ) 30NOV23

SC-3, 20 MAR 2025 to 17 APR 2025

SC-3, 20 MAR 2025 to 17 APR 2025